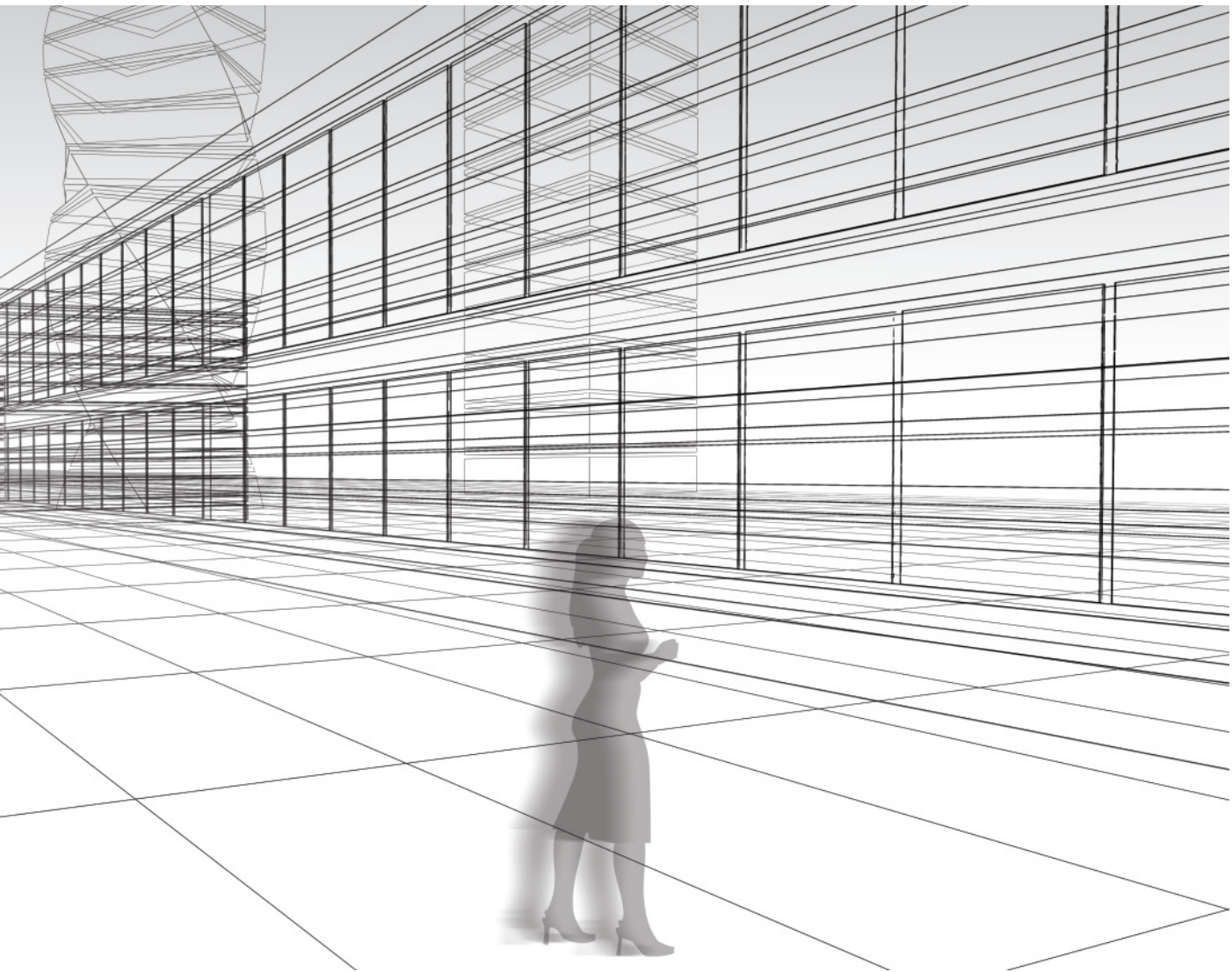




EAE PRODUCTS INTRODUCTORY BINDER



INTRODUCTORYBINDER





CONTENTS

EAE PLANTS.....	2
COMPANY PROFILE.....	3
EAE BUSBAR SYSTEMS.....	4-5
EAE BUSBAR SYSTEMS FEATURES.....	6
WHY EAE BUSBAR SYSTEMS.....	7
EAE BUSBAR SYSTEMS PRODUCTS.....	8
BUSBAR CATALOGUES.....	9-20
BUSBAR VERSUS CABLE INSTALLATION.....	21
BUSBAR APPLICATIONS.....	22
EAE INSTALLATION MANUALS.....	23
TAP-OFF UNITS.....	24
INTERNATIOANAL CERTIFICATES.....	25
OTHER TEST CERTIFICATES (UL, Green Guard, Fire, Seismic, etc.).....	26
QUALITY CERTIFICATES (ISO, LEED, OHSAS, etc.).....	27
OUTDOOR APPLICATIONS.....	28
SEISMIC SUPPORT SYSTEMS & FIRE RESISTANCE.....	29
EAE CABLE MANAGEMENT SYSTEMS.....	30
EAE CABLE MANAGEMENT SYSTEMS CERTIFICATIONS.....	31
BUSBAR FUNCTIONAL AREAS & MAJOR REFERENCES.....	32-38
EAE LIGHTING SYSTEMS.....	39
EAE AUTOMATION SYSTEMS.....	39
EAE LV PANEL ENCLOSURES.....	40

EAE PLANTS



Busbar Factory

Cable Tray Factory



Lighting & Electrotechnic Panel Factory

Busbar & Cable Tray Factory



Automation & Control System Factory

EAE Group

EAE Group of Companies; started its journey within the electricity sector in 1973 as the EAE Elektrik Company. EAE, which has been growing rapidly since the first day of its establishment, has gradually expanded its production and fields of activity by incorporating EAE Lighting in 1983, EAE Machinery in 1996, EAE Electrotechnik in 2004 and EAE Technology in 2009.



EAE Elektrik A.S. (www.eaelectric.com)

Lighting and Power Busbar Energy Distribution Systems / Cable Tray&Ladder Systems / Underfloor Ducting Systems / Trolley Busbars / Support Systems



EAE Aydınlatma A.S. (www.eaelighting.com)

LED facade & street lighting / REVO High ceiling solutions



EAE Elektrotechnik A.S. (www.eaelektrotechnik.com)

Modular Electrical Cabinets / Distribution Boxes / LV Panel Enclosures



EAE Technology A.S. (www.eaetechnology.com)

Lighting and Building Automation



OOO EAE Russia (www.eae.com.tr/ru)

Busbar Energy Distribution Systems and Cable Trays



EAE Italia Srl. (www.eaeitalia.it)

Europe Sales and Marketing Center of EAE Group Products



EAE USA Inc. (www.eaeusa.us)

NAFTA Region Sales and Marketing Center of EAE Group Products



EAE Australia PTY Ltd. (www.eaegroup.com.au)

APAC Region Sales and Marketing Center of EAE Group Products



EAE Germany GmbH. (www.eae.com.de)

Sales and Marketing Center of EAE Group Products



EAE Makine A.S. (www.eaemachinery.com)

Sheet Steel Processing Machineries

Established EAE Italy for the sales and marketing operations based in Milan. This followed by EAE Russia in 2013. With the addition of Moscow based company and its factory established, EAE became a manufacturer in the CIS region. By establishing EAE Germany, EAE Australia in 2019 and EAE USA in 2019, it has gained momentum on its global activities.

EAE Group carries on its activities in accordance with ISO 9001 Quality Management, ISO 14001 Environmental Management and ISO 27001 Information Security Management System Standards.

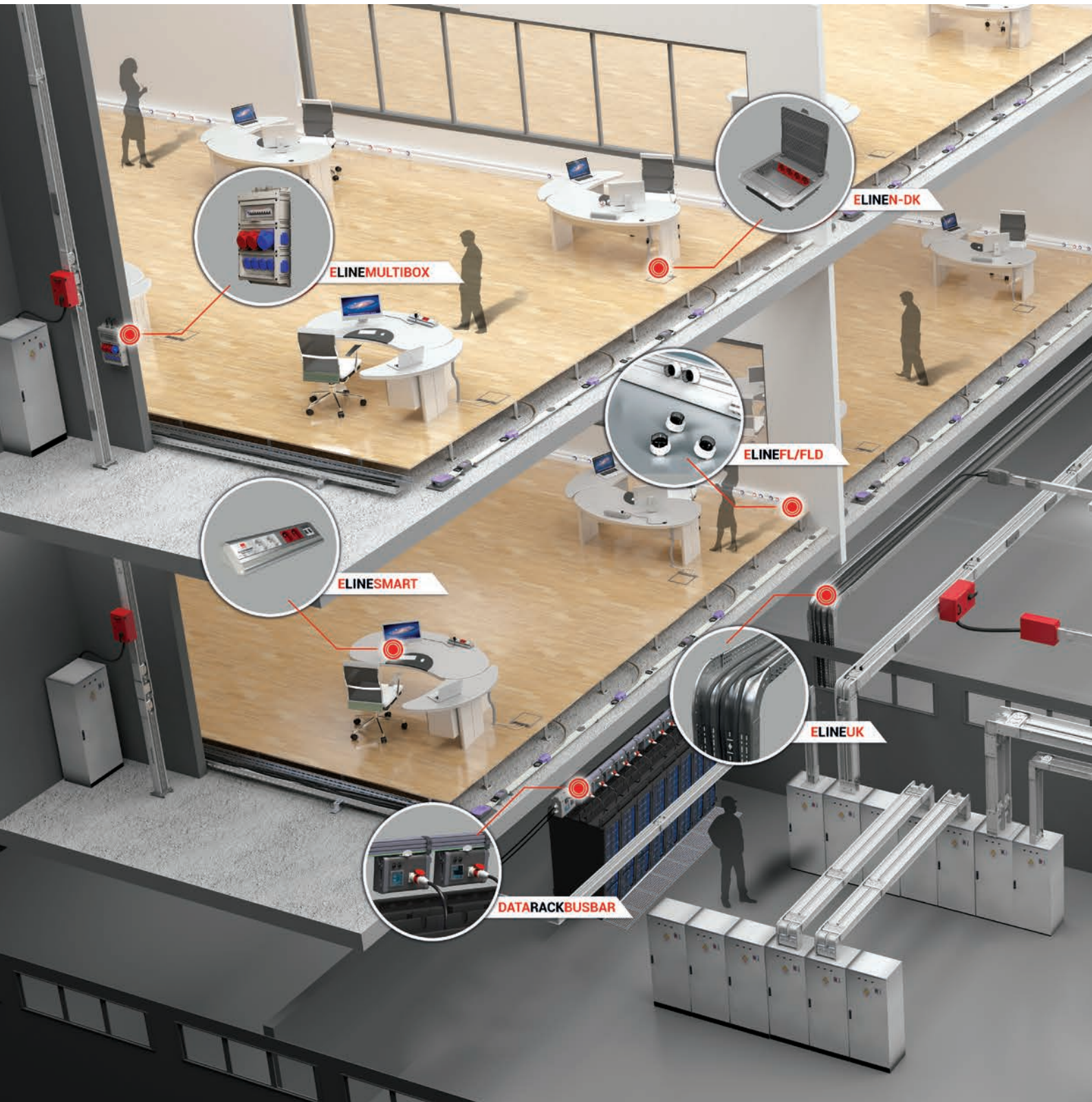
Conformance of manufactured electrical products to the world standards is certified as a result of the tests conducted by KEMA and CESI laboratories.

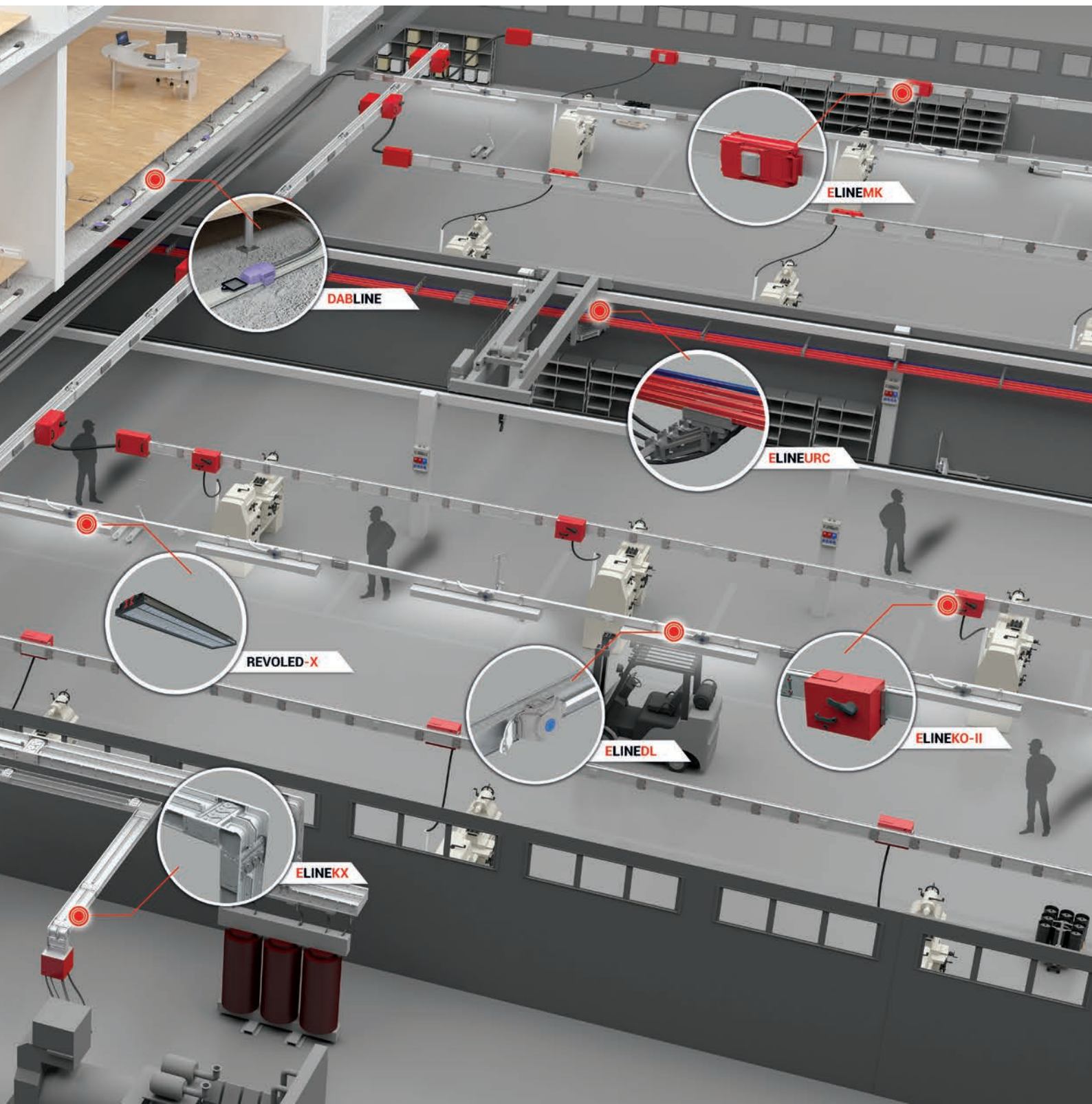
In addition to all these, we substantiate our innovative line of vision with **over 30 patents, 300 brands and 100 industrial designs.**

EAE BUSBAR SYSTEMS

EAE Product Types

- Busbar Power Distribution Systems 25A....6300A
- Trolley Busbar Systems
- Fit-out Solutions
- Cable Management Systems





EAE BUSBAR SYSTEM FEATURES

►► Know-How

- Manufacturing busbar systems since 1973
- Exporting to 100 countries with more than 10.000 global references
- Wide range of busbar systems
- Local partners and EAE engineers are experienced in design, site measurement, installation, supervision and testing

►► Flexibility

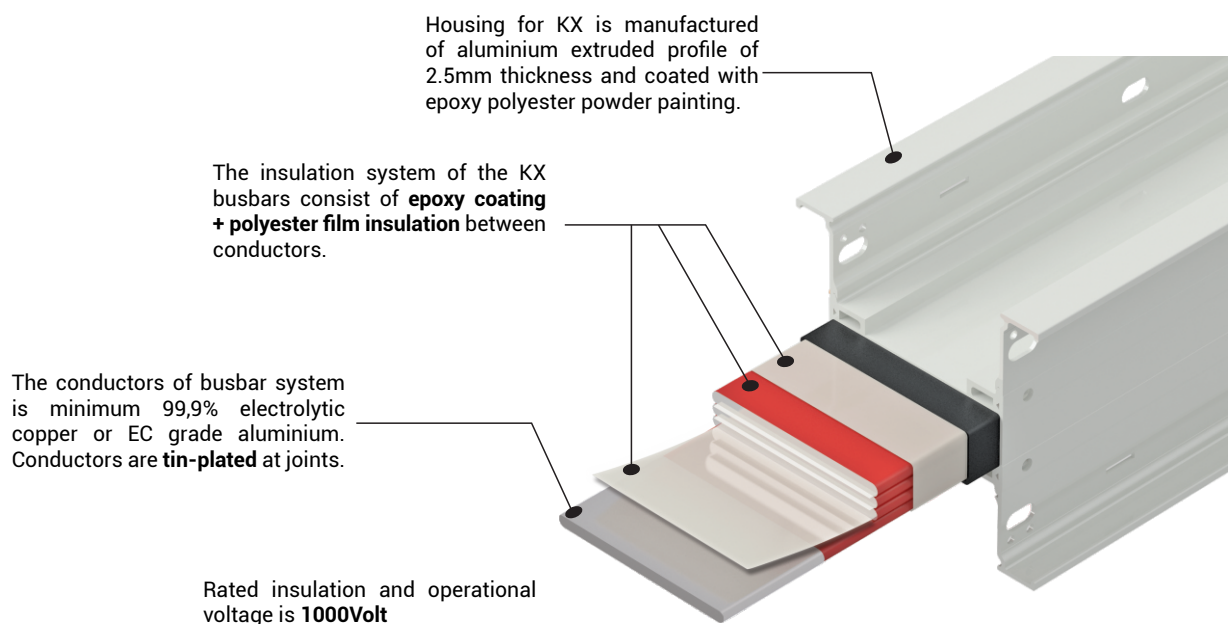
- Custom made special modules & solutions
- Patented Easy Busbar software with 3D isometric drawings
- Revit Library
- Scable Tap Off Boxes

►► Reliability

- CB Test Certificate
- Kema-Keur programme
- Halogen Free & Fire Resistant
- Interlock mechanism for plug in tap off boxes
- ISO 9001, 14001, OHSAS 14001 (ISO 45001), 27001, Green Guard, CPR

►► Delivery

- 3-4 weeks ready to dispatch time
- Emergency production in 48 hours
- Easy access to Europe, Central Asia, the Middle East, and North Africa due to Turkey's location



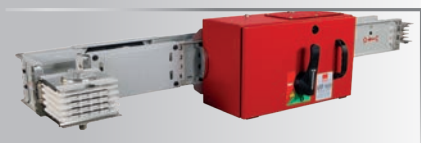
1. EAE has completed thousands of projects in many countries.
2. EAE has been manufacturing busbar systems since 1973 in Istanbul/Turkey and exporting to 100 countries. EAE manufactures busbar systems as per **ISO 9001 & 14001 & 27001 & OHSAS 18001** standards in 5 factories in Istanbul. EAE Group has a huge machinery facilities in 82,000m2 in closed manufacturing area with modern and technological equipments for all accessories, modules and parts.
3. EAE can design any type of projects with 3D isometric drawings by using their patented Easy Busbar software which can be prepared our dealers as well. In addition EAE busbar modules are also available in Revit library.
4. EAE has the manufacturing capacity to provide **fastest delivery in 3-4weeks time from the factory** as a first consignment.
5. EAE also has an emergency manufacturing team that can produce **in 48hours for any immediate requirement** of a few pieces due to site held items or site damaged items during installation.
6. Each rating of EAE Busbars are tested according to **IEC 61439-1/6** individually for all required type tests and each rating is certified separately in last few years only by KEMA/DEKRA in Holland.
7. EAE KX compact busbar are also certified by KEMA/DEKRA in Holland as **CB Test Certificate** which combines all required type tests for each ratings in year 2010.
8. EAE KX compact busbars are **UL classified**.
9. The **KEMA -KEUR** program can be carried out at the EAE busbar factory.
10. EAE KX busbar systems are tested and certified against **fire resistance as per IEC 60331 and ISO 834**.
11. EAE power busbar products are Green Guard certified.
12. Rated insulation and operational voltage is **1000Volt** for medium and high current power busbar systems.
13. Housing for KX is manufactured of aluminium extruded profile of 2.5mm thickness and coated with epoxy polyester powder painting.
14. The conductors of KX busbar system is minimum 99,9% electrolytic copper or EC grade aluminium. Conductors are **tin-plated** at joints in automated robotic inhouse plant with 20 steps of chemical treatments. Mill certificates of conductors from supplier (from France & Turkey) will be provided for every project's material.
15. The insulation system of the KX busbars consist of **epoxy coating + polyester film insulation** between conductors. The epoxy insulation is done with fully automated robotic plant at inhouse plant in same factory. Two different types and two layers of each insulation material protect the system securely for a long life operation.
16. IP protection of the housing is standard **IP55 min. IP 65 and IP67** products can also be manufactured for KX. KEMA/DEKRA test certificates for all IP ratings are available. EAE also manufactures the **IP 68** cast resin range (CR) 630A to 6300A.
17. EAE Tap Off boxes can be equipped with **any kind, brand and type of breakers** as per the consultant's specification. No need to depend on a certain brand. Dimensions of the tap Off boxes can also be changed as per site requirement.
18. Rating of plug-in type tap-off boxes is from 160A up to 630A. Plug-in type tap-off boxes have **electrical & mechanical interlock mechanism**, which ensures that tap-off box cannot be removed mechanically from the busbar when the box is at "ON" position. Jaws contacts of plug-in Tap Off box are silver-plated. Tap off boxes are manufactured of sheet steel and epoxy painted RAL 3020.
19. Plug-in point locations can be arranged at **any level/distance** of floor height precisely and any distance in milimeter of busbar pieces as per project's requirement. Tap Off boxes can be fixed at any precise height/distance required in electrical room, shaft or wherever required. Plug-in points have a hinged cover that provides IP55 protection on plug-in type busbars. A three meters standard plug-in busbar have 2 or 3 plug-in provisions in both sides. The cost of plug-in points (holes) are not priced separately and are included in the standard price.
20. EAE busbar systems are handled by our dealers with their experienced engineers in design, site measurement, installation supervision and testing.
21. All dealer's engineers have certificates from the EAE factory and authorised by EAE to provide all required services.

EAE BUSBAR SYSTEMS



E-LINE MV

►►Medium Voltage Busbar Systems 12kV/24kV 950...5700 A



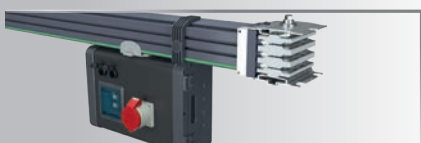
E-LINE KX

►►Compact Busbar Distribution System 400...6300 A



E-LINE CR

►►Compact Busbar Distribution System 630...6300 A



E-LINE KD

►►Data Center Busbar Distribution Systems 160A...800 A



E-LINE KO-II

►►Plug-in Busbar Distribution System 160...800 A



E-LINE MK

►►Plug-in Busbar Distribution System 100-160-225 A



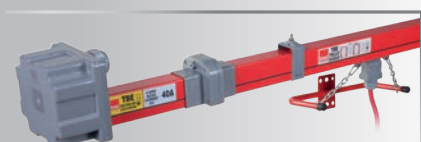
E-LINE KAP

►►Plug-in Busbar Distribution System 40-63 A



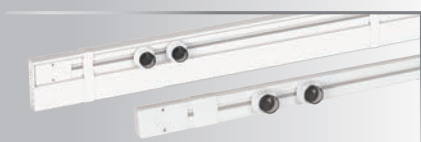
E-LINE DL

►►Lighting Busbar System 25-32-40 A



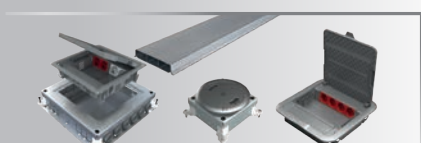
E-LINE TB

►►Multi Conductor Trolley Busbar System 35...250 A



E-LINE FL/FLD

►►Indoor Busbar Distribution System 32 A



E-LINE DK

►►Underfloor Ducting Systems



DABLINE

►►Underfloor Busbar Systems 63-80 A

BUSBAR PRODUCTS

E-LINE MV ▶▶Medium Voltage Busbar System 12kV/24kV 950...5700 A

The E-Line MV Series Busbar Systems, as the newest addition to the busbar product range, is offered with 12 kV and 24 kV variants. It offers safe and efficient power transmission. MV CR is manufactured in a single body with Al or Cu conductors embedded in DURACOMP insulation which is a composite material of epoxy and pure silicon.

Features;

- Products tested in accordance with the international standards
- Outdoor IP 68 level protection
- Corrosion-resistant
- Chemical-resistant
- Pest-resistant
- Usable in tropical environments
- High mechanical strength
- Without stack effect
- Highly resistant to short circuit
- Ensures less voltage drop in comparison with cabled systems
- UV-resistant
- No requirement for maintenance
- High short circuit resistance due to compact structure
- Special design to occupy minimum space based on the running amperage rank

CURRENT RATINGS

▶▶For 12kV Copper Conductors:

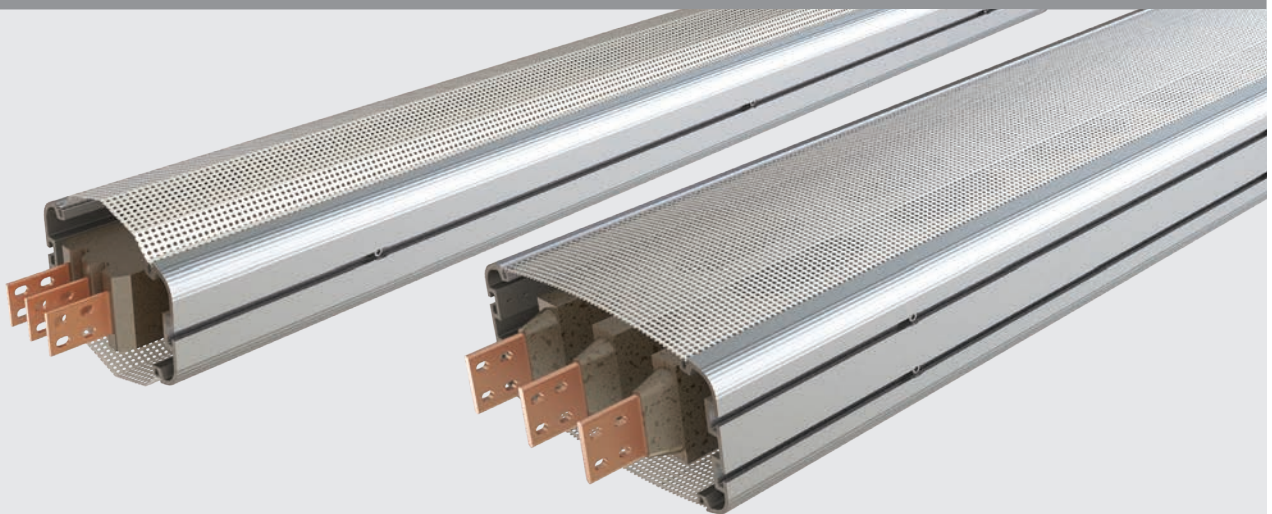
950A / 1150A / 1350A / 1650A / 2250A / 2750A

▶▶For 24kV Aluminium Conductors:

1500A / 2000A / 2500A / 3000A

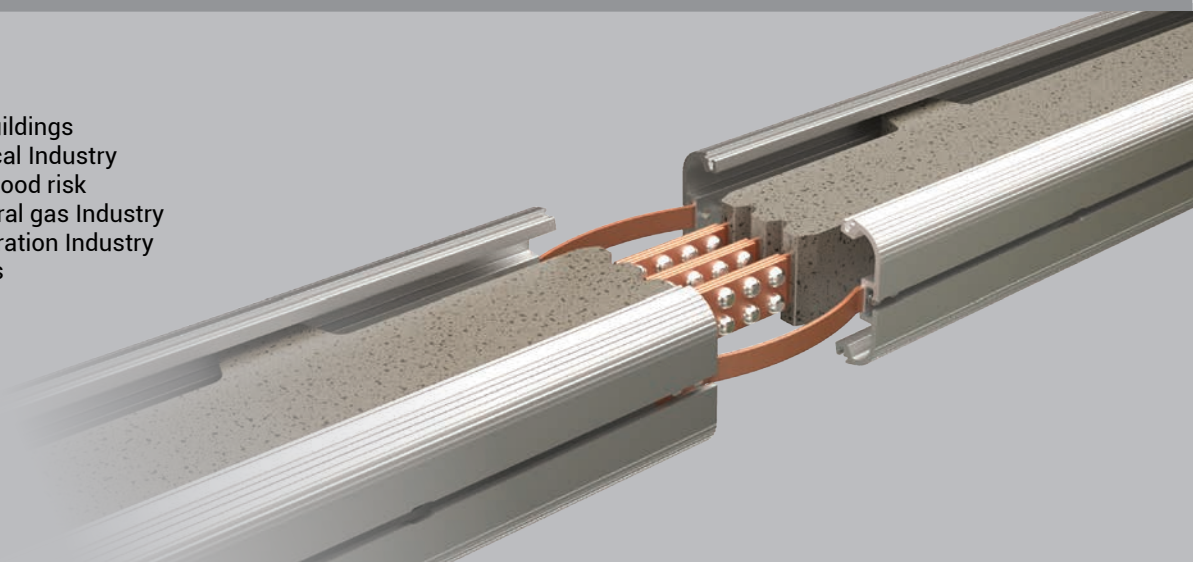
▶▶For 24kV Copper Conductors:

1800A / 2100A / 3200A / 4000A / 5000A / 5700A



Applications:

- Outdoors
- Industrial buildings
- Petrochemical Industry
- Areas with flood risk
- Oil and natural gas Industry
- Power Generation Industry
- Data centers



BUSBAR PRODUCTS

E-LINE KX ▶▶ Compact Busbar Distribution System 400...6300 A

The perfect design for high current busbar systems is the compact structure where tin plated, insulated conductors are tightly placed into the sheet metal housing. The compact structure is reliable, robust and functional.

Features;

- Epoxy coated aluminium or copper conductors are tin plated and insulated
- with B class polyester film
- Fire resistance as per IEC 60331
- Epoxy polyester, RAL 7038, painted extruded aluminium housing
- 4, 4½, 5 or 6 conductors
- IP 55 / IP 65/ IP 67
- Ready-made standard components
- Ability to supply energy either from the joints or from the tap-off points (bolt-on or plug-in)
- High electrical and mechanical endurance
- Fast, easy and reliable installation by one bolt joint construction
- Low voltage drop
- Lower total installation cost
- Compact structure
- Silver plating and F/H class polyester film are available

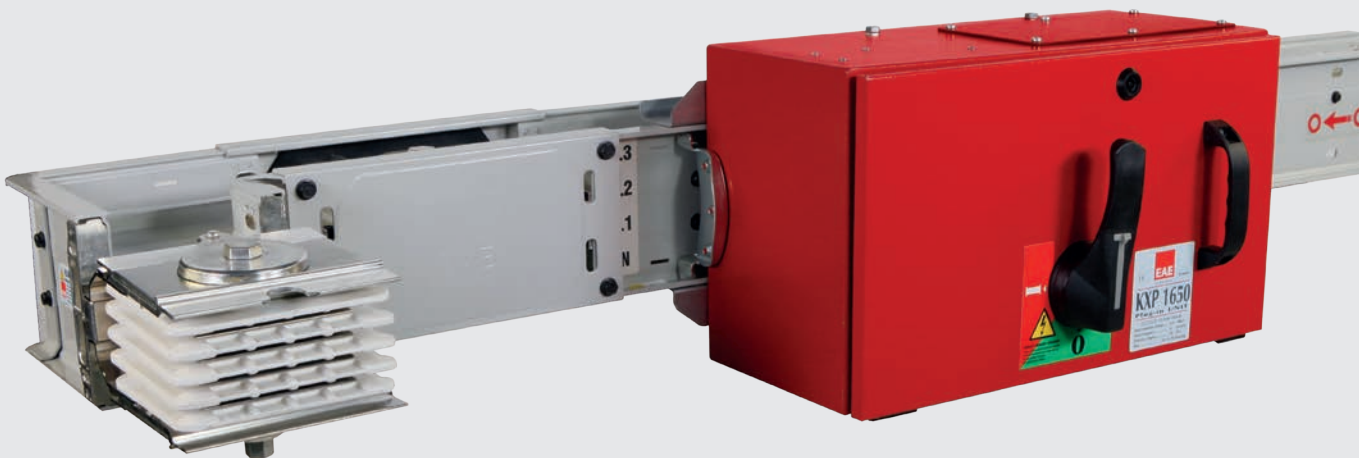
CURRENT RATINGS

▶▶ For Aluminium Conductors:

400/500/630/800/1000/1250/1350/1600/2000/
2500/3150/3200/4000/5000A

▶▶ For Copper Conductors:

550/650/800/1000/1250/1350/1600/2000/2250/
2500/3300/3600/4000/4250/5000/6300A



Applications:

- Airports
- All Industrial Premises
- High Rise Buildings
- Textile Industry
- Automobile Industry
- Hotels
- Shopping Malls
- Oil&Gas
- Hospitals
- Data Centres
- Railways
- Shipyards



BUSBAR PRODUCTS

E-LINE CR ▶▶ Compact Busbar Distribution System 630...6300 A

The body of the CR busbar is formed using DURACOMP a composite material of epoxy resin with pure silicon minerals, has high temperature durability, mechanical work features and capability of protecting E-LINE CR busbar from external influences.

Features;

- Tin plated conductors IP68 Protection Class
- 4/5 or 6 Conductors
- Clean Earth Option
- 3 Hours Circuit Integrity Under Fire, Qualified to IEC 60331-1
- Seismic Compliance; Qualified to IEC 60068-3-3; IEC 60068-2-5 and IEEE 693
- ATEX Certified

CURRENT RATINGS

▶▶ For Aluminium Conductors:

630/800/1000/1250/1600/2000/2250/2500/
3000/3200/3600/4000/5000A

▶▶ For Copper Conductors:

800/1000/1250/1600/2000/2500/3000/3200/
3600/4000/5000/6300A

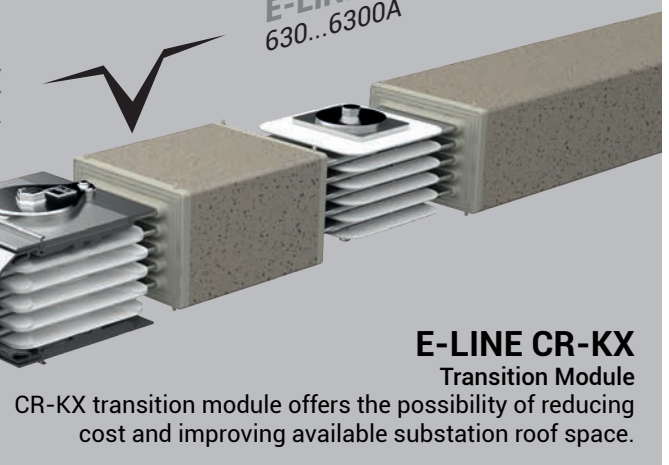


Applications:

- Outdoors
- Industrial buildings
- Petrochemical Industry
- Areas with flood risk
- Oil and natural gas Industry
- Power Generation Industry
- Data centers

IP55
E-LINEKX
400...6300A

IP68
E-LINECR
630...6300A



E-LINE CR-KX Transition Module

CR-KX transition module offers the possibility of reducing cost and improving available substation roof space.

BUSBAR PRODUCTS

E-LINE KD ▶▶Data Center Busbar Distribution Systems 160A...800 A

To power the mission critical IT infrastructures on the Data Rack Cabinets, EAE offers a highly flexible and reliable Busbar System to meet the "Scalability" challenge in the Data Centers finding the way to Moves, Adds and Changes (MACs).

Features;

- Plug-in-play anywhere along the bar
- Protected Tap-off contacts
- Aluminium or copper conductors
- 4,5 or 6 conductors
- Tin plated aluminium or copper conductors
- Safe alignment mechanism ensures correct installation and operation
- Special interlock mechanism enabling to carry the weight of the plug-in box and cables by the busbar housing
- IP 23D protection level

CURRENT RATINGS

▶▶For Aluminium Conductors:

160/250/400/630A

▶▶For Copper Conductors:

250/400/630/800A



Applications:

- Data Centers - White Space
- Data Centers - High Density Distribution
- Points and Mid-Range Power Distribution Areas
- Other - Medium sized buildings and industrial facilities



BUSBAR PRODUCTS

E-LINE KO-II ▶▶ Plug-in Busbar Distribution System 160...800 A

"E-Line KO Series" medium range busbar systems provide suitable solutions for electricity transmission and distribution in medium-sized buildings or industrial facilities. They can be used in horizontal or vertical applications. Tap off box solutions comprise sheet metal boxes with circuit breakers, or plastic boxes for small currents which are compatible with Miniature Circuit Breakers.

Features;

- Prefabricated modules
- Tap off points at every 25 cm.
- Aluminium or copper conductor
- 4, 4,5 or 5 conductors
- Tin plated aluminium or copper conductors
- Clean earth option
- IP 55 Protection level

CURRENT RATINGS

▶▶ For Aluminium Conductors:

160/250/315/400/500/600/630/800A

▶▶ For Copper Conductors:

250/315/400/600/800A



Applications:

- Production areas in factories
- Textile factories
- Furniture factories
- Automotive factories
- Automotive sub-industries
- Malls
- Exhibition Areas
- High-rise buildings
- Hotels
- Hospitals
- Business Centres
- Data Centres



BUSBAR PRODUCTS

E-LINE MK ▶▶ Plug-in Busbar Distribution System 100-160-225 A

The small power range busbar systems of E-Line MK series provide flexible and cost-effective solutions for the transmission and distribution of electricity in small-sized enterprises, workshops and industrial facilities.

Features;

- 4 and 5 conductors
- Clean earth option
- Tin plated aluminum or copper conductors
- Block joint
- Tap off points at every 25cm
- Hinged plug-in point IP covers
- Flexible, multi functional elbows
- IP 55 protection level

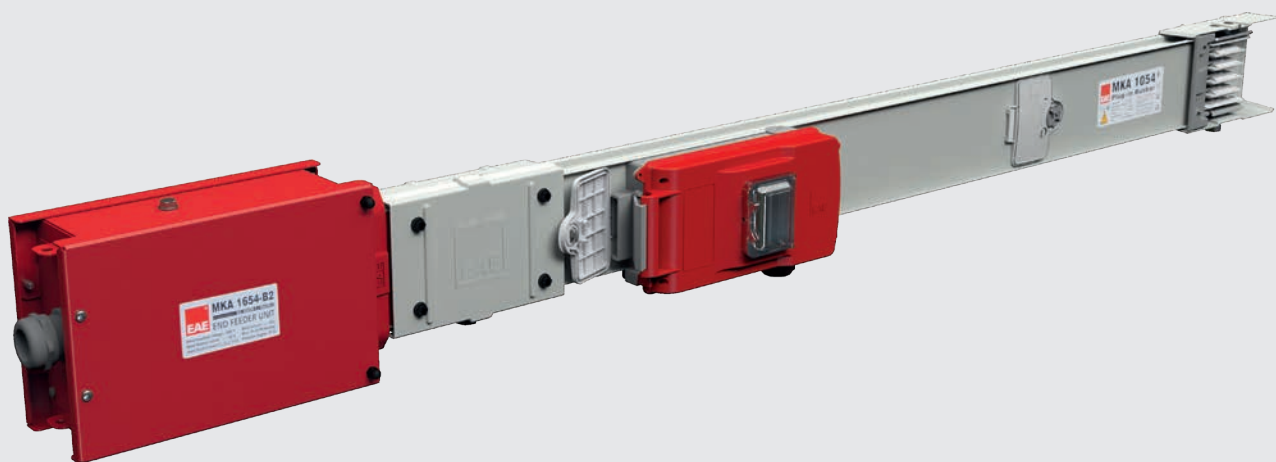
CURRENT RATINGS

▶▶ For Aluminium Conductors:

100/160A

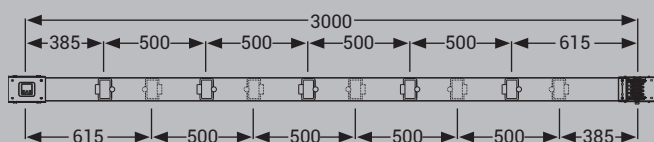
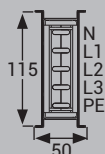
▶▶ For Copper Conductors:

100/160/225A



Applications:

- Small enterprises
- Local production areas in factories
- Workshops
- Textile facilities
- Automotive facilities
- Automotive sub-industries
- Small-sized industrial facilities
- Shopping Malls
- Large Markets
- Data Centers



E-LINE KAP ▶▶ Plug-in Busbar Distribution System 40-63 A

Small power range busbar systems of E-Line KAP series provide economical solutions for the energy needs of small enterprises powering small machinery, sewing machines, hand tools, machine tools, etc.

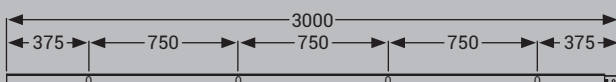
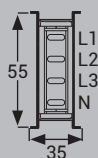
Features;

- Electrolytic copper conductors are continuously tin plated and insulated along their full length. (Except tap-off positions) with a self extinguishing plastic sleeve.
- Quick, easy and reliable mounting.
- 5th conductor option.
- Plugs with phase indication
- Tap-off plugs and boxes; are designed to prevent improper use of busbar.
- Silver-plated joint contacts are designed to minimise joint contact resistance.
- Tap-off points at every 75cm (42cm on request).



Applications:

- Small production areas in factories
- Ready-made clothing facilities
- Workshops
- Small industrial facilities
- Malls
- Underpasses & Tunnels



BUSBAR PRODUCTS

E-LINE DL ►► Lighting Busbar System 25-32-40 A

E-LINE SL

E-LINE DL-DALI

E-LINE DL-DIM

DL Lighting busbar can be configured with more than one circuit. Utility and emergency lighting power supply can be distributed using only one busbar run.

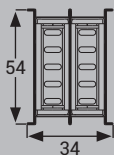
Features;

- Maximum number of conductors : (5+5)
- Clean earth and double neutral wiring configurations available
- Continuously tin plated electrolytic copper conductors
- Hinged plug-in point IP protection covers
- IP55 protection degree
- Jawed tap off contacts
- Plug-in points at every 75cm on both sides (8 in total)
- Robust structure
- Tap off plugs with phase indicators
- Continuously insulated conductors
- All ratings tested according to IEC 61439-6



Applications:

- Warehouses
- Workshops
- Car Parks
- Supermarkets
- Shopping Malls
- Raised Floor Applications



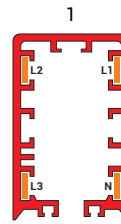
BUSBAR PRODUCTS

E-LINE TB ►►Multi Conductor Trolley Busbar System 35...250 A

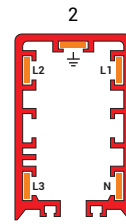
"E-Line TB Range Trolley Busbar Trunking Systems" are designed to provide power for moving machines. The busbar's brush (carbonized) trolley tap off box is mechanically connected to moving systems and provides uninterrupted power by moving with the machine.

Features;

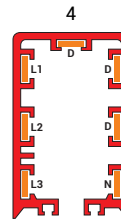
- Current ratings: 35A/63A/80A/100A/125A/160A/200A/250A
- Standard 4 or 7 conductor. 3, 5, 6 conductor (optional)
- Continuous copper conductors
- PVC enclosure
- 4m standard length



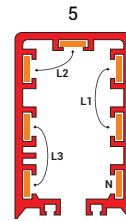
Standard
4 conductor



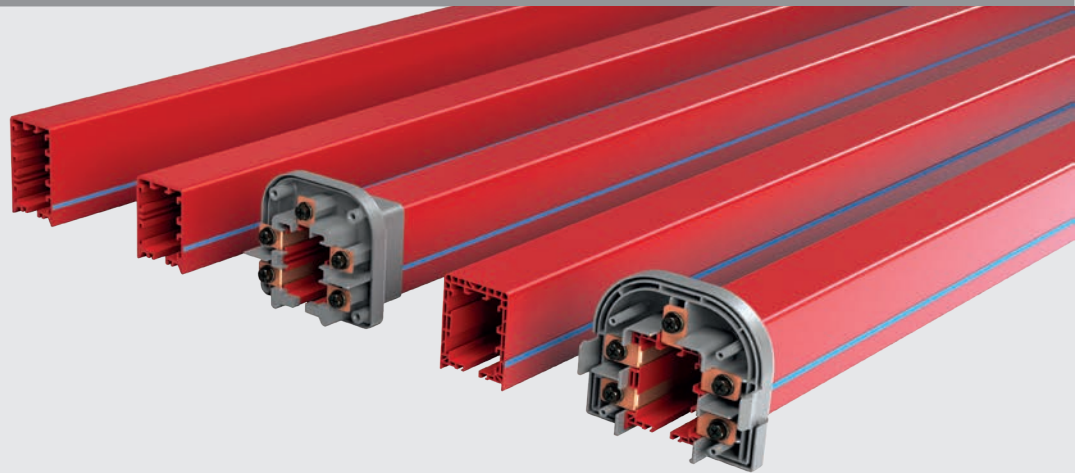
Optional
5 conductor



Optional 7 conductor;
3 phase + neutral + 3
conductor for data



Standard 7 conductor;
parallel 2 conductors per
each phase + neutral



Applications:

- Hoists and Overhead Cranes
- Textile industry
 - Cutting tables
 - Pastal machines
- Movable manufacturing Lines
- Automated stores
- Other similar areas



FIT-OUT PRODUCTS

E-LINE FL/FLD » Indoor Busbar Trunking Systems (32 A)

Aesthetic, safe, practical and flexible structure eliminating cable mess. E-LINE FL Indoor Busbar Trunking Systems

E-LINE FL Indoor Busbar Trunking Systems can be mounted on any structure or surface using brackets. They can be used separately for power or UPS sockets requirements when needed.

Stylish and special UPS sockets various colours can be installed in any position spot without the need for a hand tool.

Features;

- Power or UPS sockets; 16A, 250V (protected)
- FL Busbar; 32A, 250V Operating voltage
- IP2X Protection Class
- Use of sockets in various colours for mains or UPS circuits
- Single phase curcuit (3 conductors); L+N+(PE) (65X28 mm)
- Socket option with cylindrical fuse protection.



Applications:

- Offices
- Workshops
- Stores
- Hospitals
- Laboratories
- Airports
- Schools



FIT-OUT PRODUCTS

E-LINE DK DABLINE

» Underfloor Ducting Systems
Underfloor Busbar Systems 63-80 A

Underfloor Power Distribution Systems provide aesthetic, safe and secure cable distribution by eliminating the cable clutter in offices and similar working environments. The system can easily be adapted to for relocations or capacity increases in offices and work places.

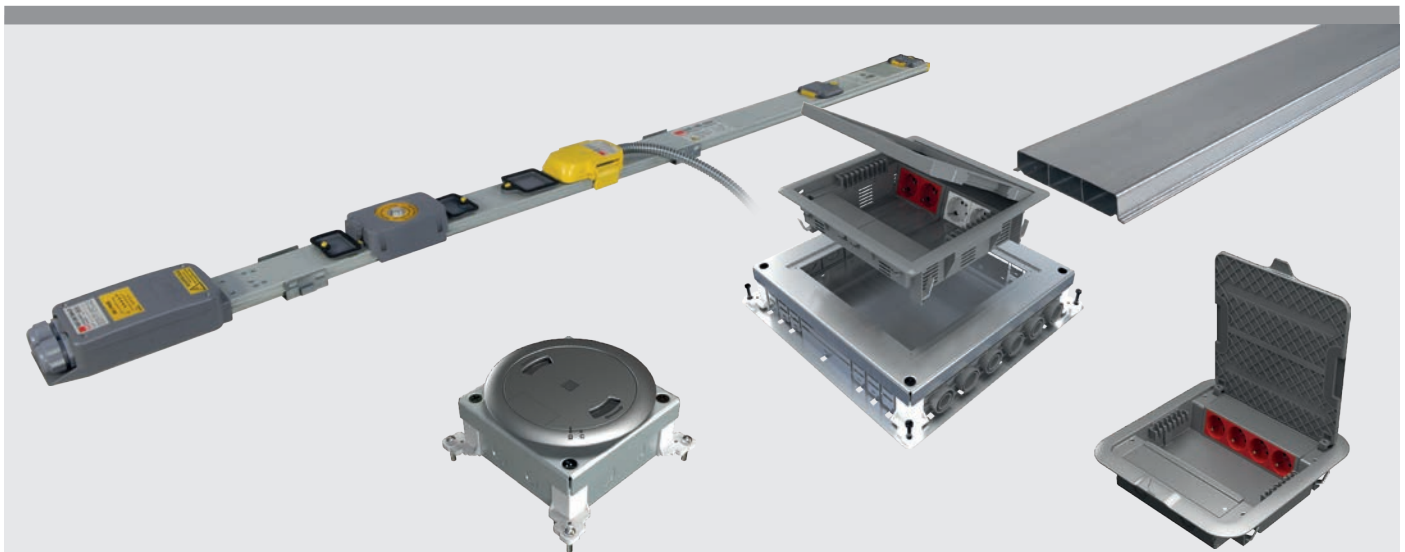
Features;

- Easy Planning
- Possibility of multiple outlet
- Easy and quick cable ducting
- Robust construction
- User friendly design
- Reliable cable management

DABLINE busbar systems have colour coded conductor options, and are used for raised floor applications in offices. The small size of DABLINE makes it possible to install the system into very shallow voids down to 65mm floor height.

Features;

- 1200 - 2400 - 3000 mm optional straight lengths
- Plug-in outlets every 300mm or 600mm option
- IP55 Protection Degree
- Halogen Free plastics up to 960 °C Fire rating
- Keyed Tap-off Plugs
- The spring contacts of busbar are silver plated
- In case of impact with the body of the busbar, safety of the system is ensured with the conductors being fully insulated along their whole length.
- Earthing continuity and installation at joint point are provided by using single bolt.
- Each busbar length is complete with integral floor fixing brackets.



Applications:

- Banks
- Shopping Centres
- New Generation Offices
- Hotels
- Hospitals
- Conference Centres
- Educational Building
- Cinemas and theatres
- Tourist Facilities etc.



FIT-OUT PRODUCTS

E-LINE SMART ►►Fit-out Solutions

Products ensure high ease of use, depending on your personal needs and preferences with modular type power and low voltage sockets. Products are 7 different types, according to size in socket needs, universal and modular design makes it suitable to accept any brand of socket. Built-in type or free standing on the office desk and furniture; offers flexible and definitive solution for mains, UPS, data, telephone and multimedia needs.

Features;

- The E-LINE SMART range offers comfort, style and functionality for users in living and working environments; available equipped or non- equipped to accept power and data sockets.
- Compatible structure with offices, meeting rooms, every desk and in specific work areas and open office furniture
- Energy and low-voltage sockets can be used optional wide cable terminations for today's office needs
- Modular structure and innovative design with anodized aluminium body and polycarbonate covers, 8, 10, 12, 14, 16 and 18 modules are standard production capacity. Aesthetics and high-performance products can be produce optional comfortable with special production opportunities in different sizes and equipment



Applications:

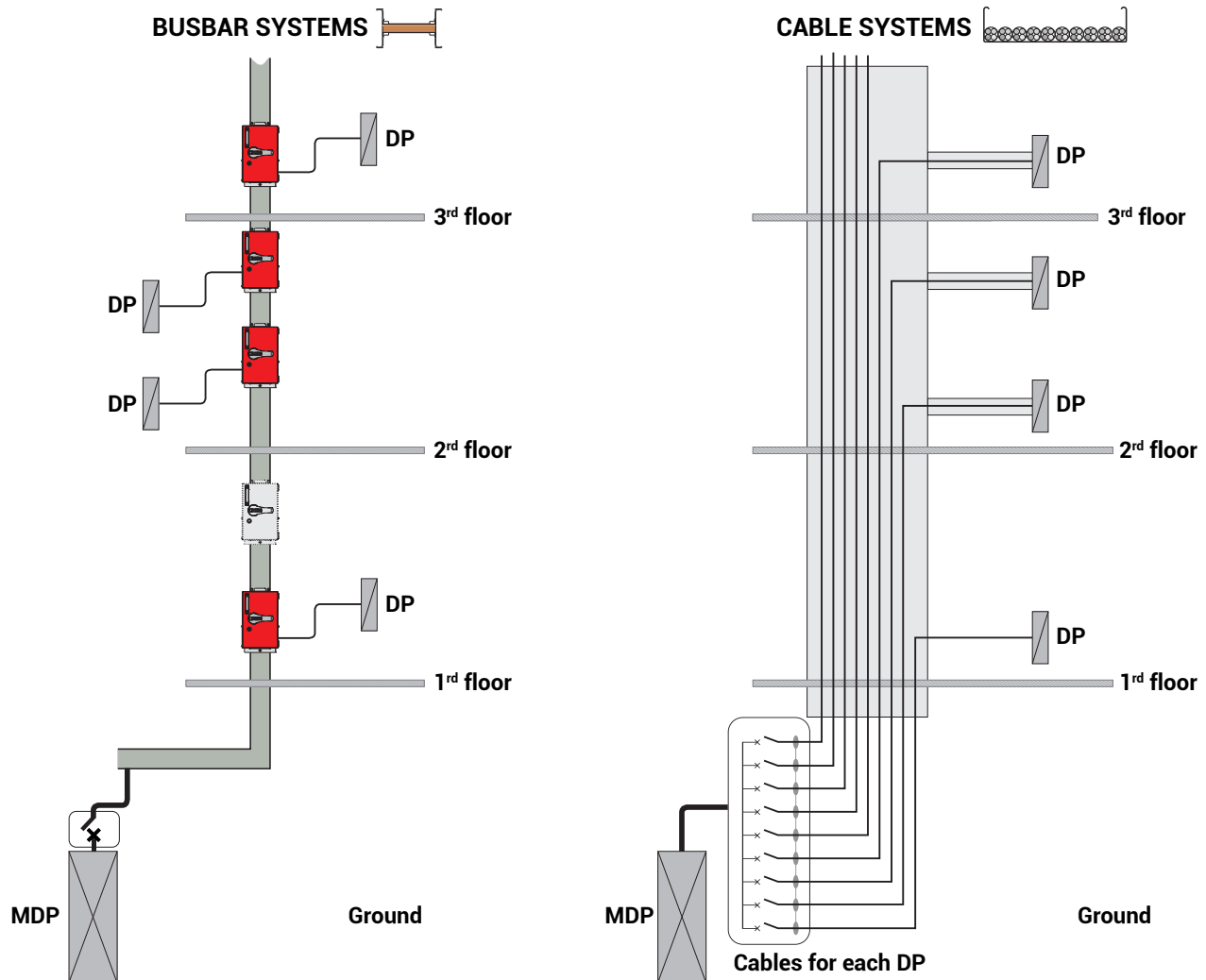
- Banks
- Office and work places, administrative buildings
- Hotels
- Hotels
- Hospitals
- Schools, classrooms
- Shopping Malls
- Conference Halls
- Call Centres
- Trading Rooms
- Cinema and theatre buildings
- Industrial Plants



BUSBAR SYSTEMS ADVANTAGES OVER CONVENTIONAL CABLING SYSTEMS

Power is a vital system at any building. Therefore, for the safety of work and living areas, each product to be used in that areas, must be carefully calculated and selected in order to achieve the safest and longest service life for area safety.

CABLE - BUSBAR COMPARISON



BUSBAR SYSTEMS ADVANTAGES

Technical

- High short-circuit strength and better voltage drop
- To be manufactured up to **IP68** (ingress protection level)
- Busbar metal housing provides **long life service** due to their robust structure
- Substantially **reduces the risk of fire and fire propagation** due to metal encapsulation proven by international certificates, **%15-20 less fire load** than cable,
- **Flexibility** in enabling the provisional connection by tap off units to get power easily
- **Can be expanded from end of any installed busbar line without any modification** on existing power system
- Work with less space for the electrical distribution system
- Meet ever increasing power requirements
- Integrating to building Management systems by smart communication that can be equipped with EAE's tap-off units at any place of power busbar system

Economical

- **Provide cost effective solutions**
- Installation time is much shorter than cable system. This provides **low installation time and man power costs.**
- **Eliminating the use of Cable Trays**
- **Reducing number of distribution board**
- **Reducing number of main panel board**
- **Reducing number of MCBs / MCCBs**
- **Avoiding many accessories used for cable systems**
- Installation time is much shorter than cable system. This provides **low installation time and man power costs.**
- Busbar systems are fully **demountable & recyclable**
- Very easy to install the busbar modules in a **short time by saving time & money**

BUSBAR APPLICATIONS



Panel Applications



Distribution Applications



Generator Applications



Transformer Applications



Outdoor Applications



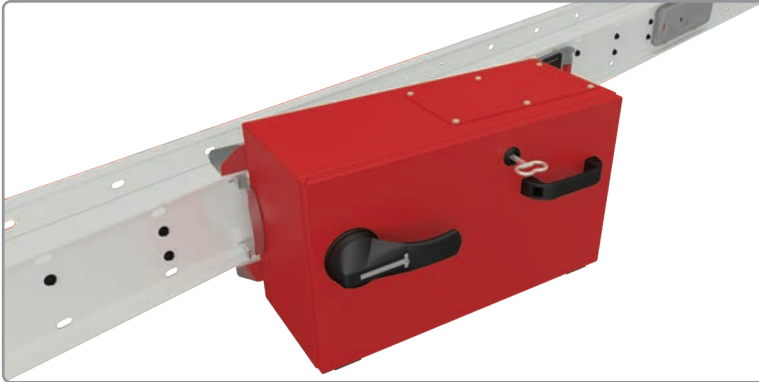
Installation

Maintenance-free modular structure provides quick, low cost, safe and portable installation.

Self-aligning pin, ensures proper positioning of the joint for installation with no need to measure for alignment.



TAP-OFF UNITS



Plug-in tap off box allows drawing power at any plug-in point without any interruption on the main busbar line. (See page 7, clause 19)

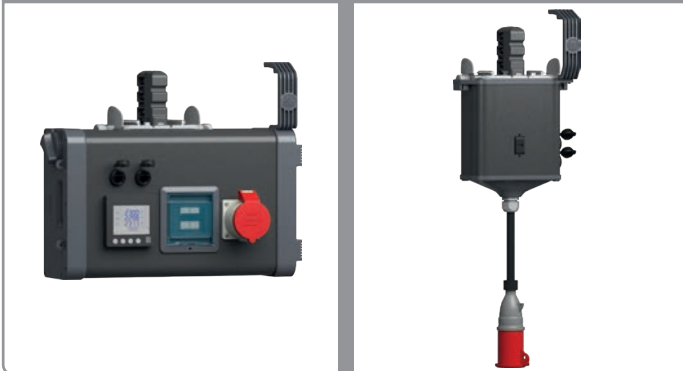
Bolt-on tap off is an unique technology to draw power up to 1000 A at block joints providing flexible solution.

EAE tap off boxes are compatible with World wide brands of circuit breakers and switches

All metal enclosure tap-off boxes can be supplied;

- With any type, model, brand of breakers
- With any gland type or with a blank gland plate.
- Any required colour of housing
- Has an electrical interlock mechanism
- Has a mechanical interlock mechanism
- Has IP55 protection degree
- Has tulip contacts made of silver plated copper
- Can be tailor made to any size

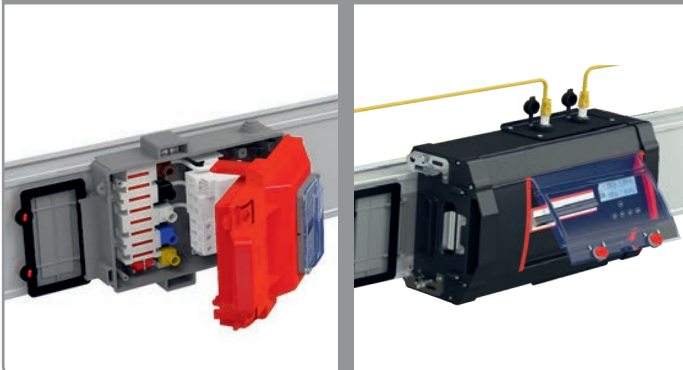
KD TAP OFF UNITS



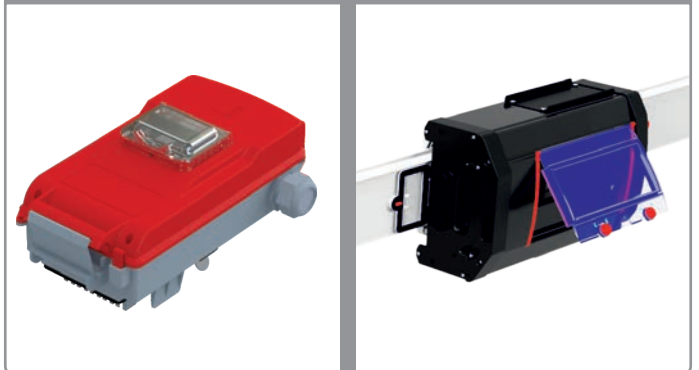
KD Plug-in 125 A

- Aluminum Case
- Vendor Neutral Components
- Customization with different setups of MCB, SPD, RCCB, Power Meters, Energy Analyzers, Current Transformers
- Safe Locking Mechanism

KO-II TAP OFF UNITS



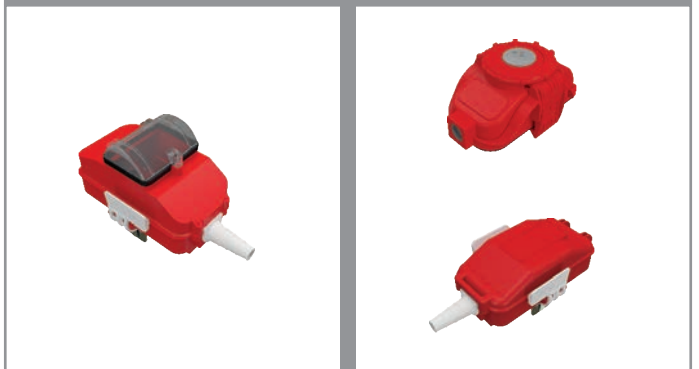
MK TAP OFF UNITS



DL TAP OFF UNITS



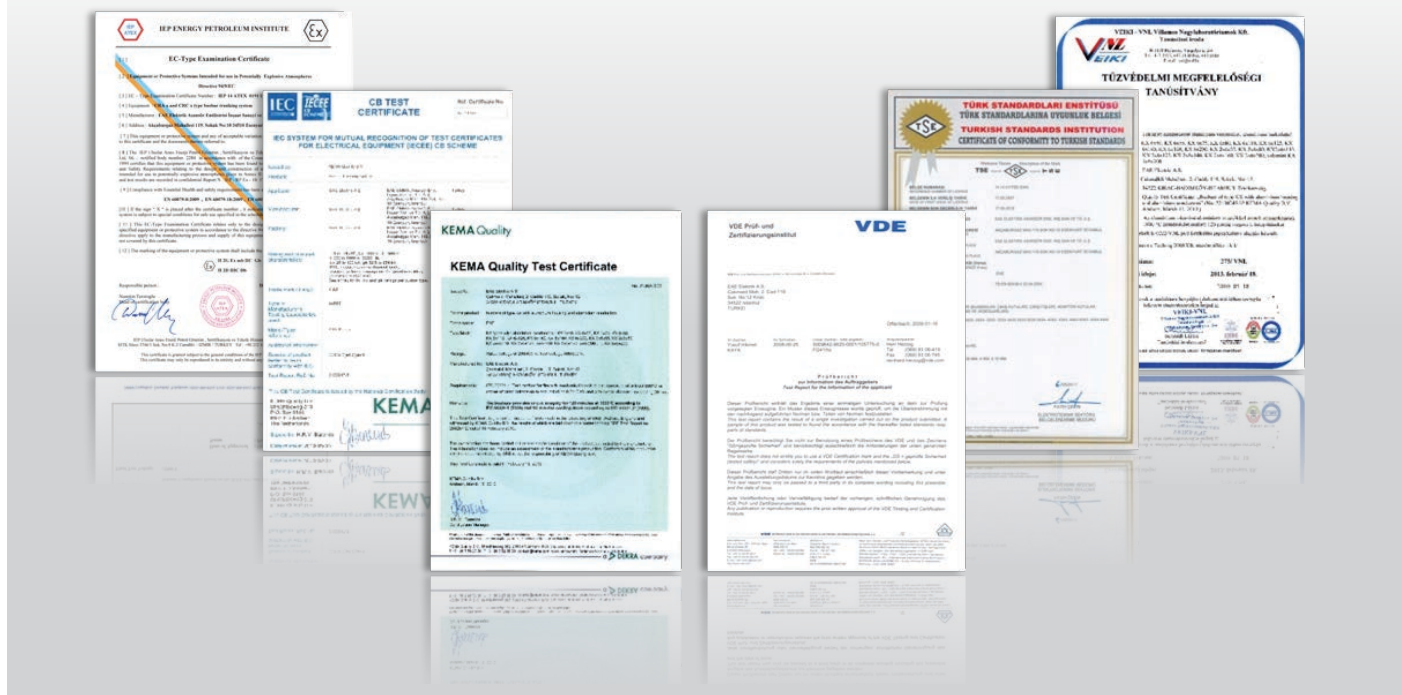
KAP TAP OFF UNITS



Certification

IEC 61439 – 6 relates to Busbar systems, replacing and adding to requirements of IEC60439-2 such as resistance to corrosion, verification of thermal stability of enclosures, resistance to mechanical impact, electrical resistance tests, impulse withstand voltage and various other electrical tests such as fault loop impedance.

The IECEE CB Scheme is an international system for mutual acceptance of test reports and certificates dealing with the safety of electrical and electronic components, equipment and products. Busbar systems should have a CB Test Certificate, which combines all the required type tests for each ratings according to IEC 61439-6.



OTHER TEST CERTIFICATES



■ Fire Resistance Tests IEC 60331-1 (Circuit Integrity Under Fire for E-LINE KX)

- IEC 60331-1 1000°C-3 Hours - BRE, UK
- IEC 60331-1 950°C-3 Hours - TUV, Singapore
- IEC 60331-1 1000°C-2 Hours - DEKRA, Holland
- BS 8491 830°C-2 Hours - BRE, UK (Sprinkler Water+Mechanical Impact)
- EN 50399 Low Heat and Low Smoke Release B1/S1 dO - Dekra, Holland

■ Fire Resistance & Circuit Integrity Tests for E-Line KX with Plug in Tap Off Box

- IEC 60331-1 830 C - over 3 hours, Magnetic MCCB - DEKRA, Holland
- IEC 60331-1 830 C - over 3 hours, NH Fuses-DEKRA, Holland

■ Flame Propagation Test IEC 60332-3 (IEC 61439-6,10.101)

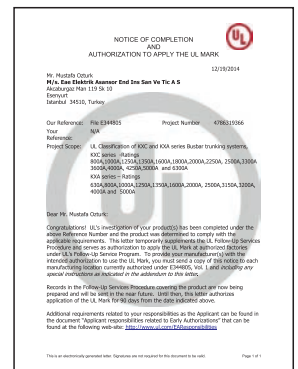
■ Fire Barrier Test - 2 Hours ISO 834-1 (IEC 61439-6,10.102)

SEISMIC



- ▶▶ Seismic Test IEEE 693
- ▶▶ Seismic Test EN 60068-3-3
- ▶▶ Qualified in Zone 4 (worst case seismic applications)

UL Classification



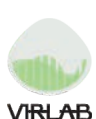
KEMA KEUR - DEKRA



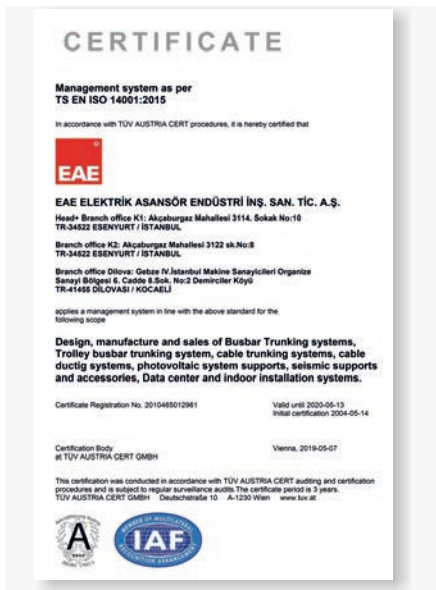
- ▶▶ Continuous production monitoring program.

Acceptable for use in environments such as schools and healthcare facilities.

GREEN GUARD



QUALITY CERTIFICATES



ISO 14001 Management System



ISO 9001 Management System



ISO 27001 Management System



OHSAS 18001 Management System



Leed - GOLD Certificate

OUTDOOR APPLICATIONS

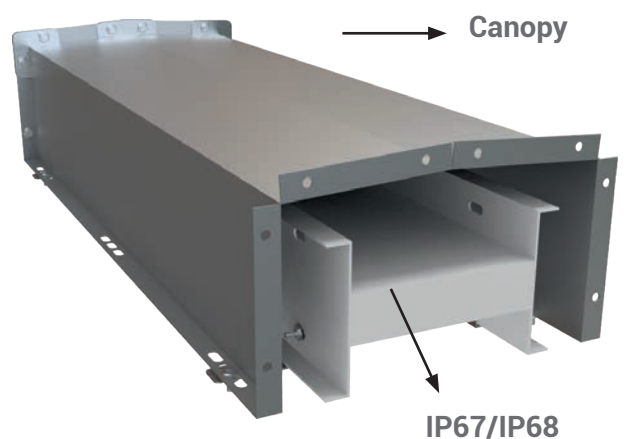


Outdoor Applications

EAE Cast resin busbar is suitable for extreme conditions and outdoor applications. CR busbar offers a wide range of current ratings for horizontal or vertical mounting with IP 68 protection degree.

EAE- Line CR busbar is ex-proof, fire resistant, seismic compliant and suitable to connect with E-Line KX busbar systems by E-Line CR-KX Transition Module.

CR-KX transition module offers the possibility of reducing cost and improving available substation roof space.





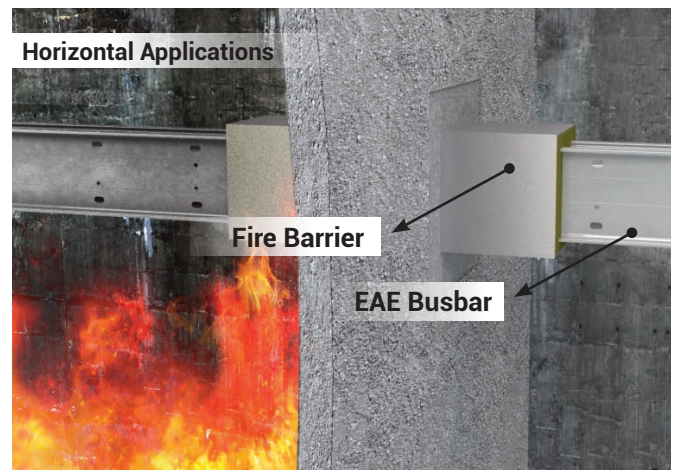
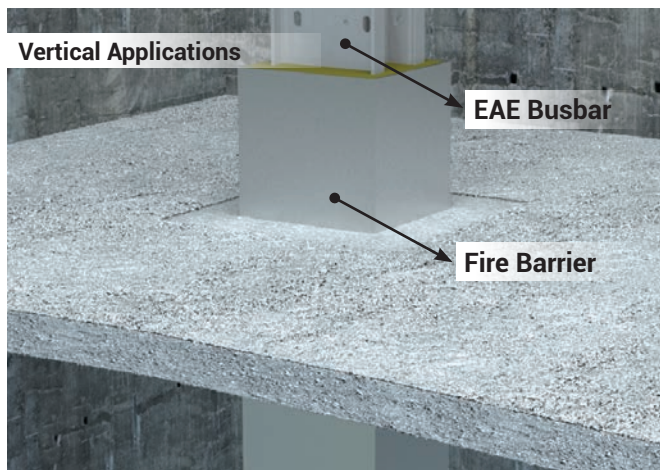
Seismic Support Systems

EAE Seismic support and busbar systems offer perfect solutions of installations for earthquake protection according to IEC 60068-2-57, IEC 60068-3-3, IEC 60980, IEEE 693:2018. Seismic supports which can be applied on all kinds of installations ensure easy and quick mounting. Thanks to the accessories designed for steel-beam and space frame connections.

Busbar Fire Barrier

Fire barriers are used to prevent the transition of heat and smoke from one zone to another for a period determined by the related standards 60-90-120 minutes.

ISO 834-1, EN 1366-3, DIN4102-9 Main goal is to stop the heat and smoke passing from one area to another and to prevent the spread of fire. In this regard, EAE has designed and developed a special fire barrier module for wall and floor openings to protect fire & gas exceed.



Circuit Integrity

DIN Standard

The aim of the burn test is to validate the correct operation of the electrical system and to ensure that the critical services, such as emergency lighting and fire alarm systems, remain functional for long enough to organize a rescue in the event of a fire.

The busbar system has a special fire protection in accordance with DIN 4102-12. In such an installation, the busbars are directly exposed to flames in the event of a fire.

IEC and BS Standards

Busbar is exposed to direct flame and impact in horizontal position. Busbar must possess the characteristics for providing circuit integrity so long as defined time duration. IEC 60331, BS 6387, BS 8491



EAE CABLE MANAGEMENT SYSTEMS



E-LINE TKS

▶▶Pre-galvanized or Painted Trunking System



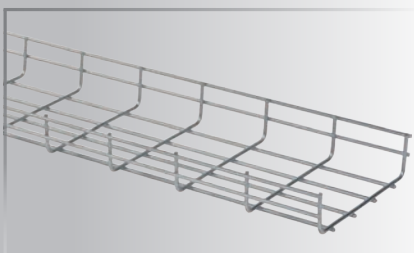
E-LINE CT

▶▶Range Hot-Dip Galvanized Cable Trays



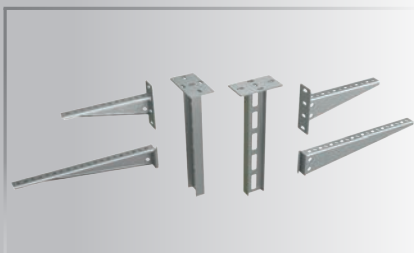
E-LINE KC

▶▶Range Hot-Dip Galvanized Cable Trays



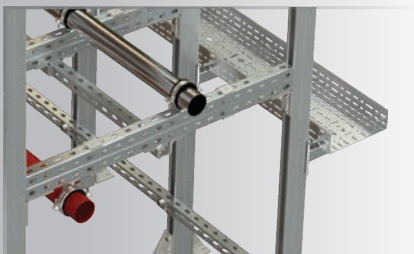
E-LINE TLS

▶▶Wire Mesh Cable Tray Systems



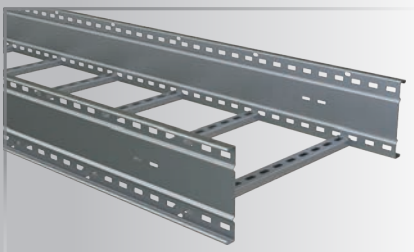
E-LINE AA

▶▶Support System & Accessories



E-LINE M-FIX

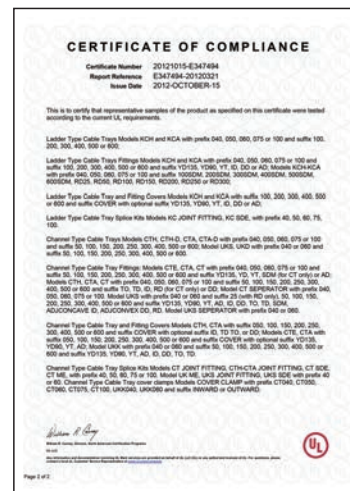
▶▶Electro-Mechanical Support and Suspension Systems



E-LINE KCA-OG

▶▶Oil&Gas&Industrial Cable Ladder Systems

EAE CABLE MANAGEMENT SYSTEMS CERTIFICATES



■ ISO 9001 & 14001

■ FIRE E-90

■ KEMA

■ GOST

■ LEED-GOLD

■ SEISMIC TEST CERTIFICATE

■ TSE TSEK

■ CE DECLARATION

■ UKRAINE STANDARDS

■ UL

EAE ELECTRIC BUSINESS UNITS

►► Oil&Gas Industries

EAE Heavy Industry Business Unit, established within EAE Elektrik, offers our customers superior quality services and products by focusing on the Heavy industry market requirements.

Within the scope of services, we provide engineering, production and documentation that are required by the project basis. From A to Z; EAE is a specialized company that can offer custom design solutions to variety of projects like ; Oil&Gas Processing-Refinery-Petrochemicals-Industrial-Enviromental.

- With our deep know-how and years of experience, we can assist you in both finding and developing a comprehensive solution according to your specific needs about Low Voltage and Medium Voltage Energy Distrubution Busbars.

CR (Cast Resin) Busbar is especially designed and manufactured to extremely harsh enviroments by the features of IP68 and exproof structure.

Focusing on the minimizing the cost of the projects, KCA OG Wide Span cable ladder can provide the decline up to 30% of the supporting system costs by designing supports with 6 mt span.

- KCA OG meets the NEMA 20C requirements with DEKRA Certificates.

Aluminum KCA AL , Stainless Steel KCA OG , Hot Dip Galvanized KCA OG & Glass-reinforced Polyester KCA GRP Designer can use EAE Cable Tray's AREVA and Smart3D Tools by downloading from web page.



►► Data Centres

EAE busbars are running succesfully in thousands of projects from different sectors in more than 100 countries.

EAE DATA CENTER BUSINESS UNIT is providing;

- Consultative Sales Approach to the end users to convince them for the EAE solutions
- Strong Marketing and Business Development to the sales channel and end customers
- General Technical Support, Project Support and Customized Solutions for;
 - Busbar
 - Tap Off and End-Feeder Boxes
 - Rack Cabinet & Containment Systems
 - Cable Tray Systems



EAE busbars are running successfully in thousands of projects from different sectors in more than **100** countries.

►► **Data Centres** (EAE Business Unit)

►► **Oil&Gas Industries** (EAE Business Unit)

►► **Industrial Plants**

Textile Industry / Automotive Industry / Manufacturing Facilities / Heavy Industry

►► **Commercial Buildings**

Office Towers / Residential Towers / Hotels / Shopping Malls /

►► **Energy Utilities**

Power Plants / Solar Plants / Cooling Plants

►► **Service Compounds**

Hospitals / Universities / Public Utilities / Government Buildings

►► **Transportation Infrastructure**

Highway Tunnels / Railway Tunnels / Metro Stations/ Airports

►► **Oil&Gas Industries** (EAE Business Unit)



SHAH GAS –ABU DHABI, U.A.E



MOZYR REFINERY , BELARUS

- | | | |
|---|--|--|
| <ul style="list-style-type: none"> • SONATRACH GAS PROCESSING FACILITY, ALGERIA • AL DHABBIYA GAS FACILITIES TR STATION, U.A.E • MOBIL OIL PETROCHEMICAL PLANT, UK • ELF REFFENERIE, GERMANY • RAFFINADERJI SINES, PORTUGAL • GAS PROCESSING PLANT TURKMENBASHI, TURKMENISTAN • SHAH GAS DEVELOPMENT PROJECT-ABU DHABI, U.A.E • MOZYR RAFINERY, BELARUS • FRAMES VIURA, SPAIN • BIDCO OIL, MADAGASGAR | <ul style="list-style-type: none"> • CENTRALE A TURBINES A GAZ-MONAGUIA, TUNUSIA • MARINE XII BLOCK OFF SHORE PLATFORM, CONGO • SOCAR STATE OIL COMPANY HEAD OFFICE, AZERBAIJAN • SOUTH YOLOTEN GAS FIELD PROJECT, TURKMENISTAN • TUPRAS KIRIKKALE HYDROPROCESSING UNIT, TURKEY • AL RUMEITHA GAS FACILITIES TR STATION, U.A.E • RABAB HARWEEL INTEGRATED PROJECT (ONGOING), OMAN • PETKIM ALIAGA REFINERY, TURKEY | <ul style="list-style-type: none"> • LUKOIL BOURGAS REFINERY, BULGARIA • SLOVNAFT, SLOVAKIA • SICON OIL, LIBYA • ADNOC HEAD QUARTER-ABU DHABI, U.A.E • TUPRAS ALIAGA REFINERY, TURKEY • SIPCHEM, JUBAIL, SAUDI ARABIA • ABU DHABI PETROCHEMICAL REFINERY, U.A.E • TUPRAS IZMIT REFINERY, TURKEY • MOZYR REFINERY RTP-13&21, BELARUS • TECHNIC, ITALY • TOTAL ANTVERPEN, BELGIUM • CIVIL REFINARY-EMCO-ABU DHABI, U.A.E |
|---|--|--|

BUSBAR FUNCTIONAL AREAS & MAJOR REFERENCES

►► Data Center (EAE Business Unit)



CISCO SYSTEMS-BRUSSELS, BELGIUM



DATA CENTER EQUINIX AMS3, HOLLAND



GALILEO DATA CENTER-LONDON, UK

- | | | |
|---|--|---|
| <ul style="list-style-type: none"> • T-MOBIL SERVER CENTER FRANKURT, GERMANY • SOCIAL DATA CETRE-LULEA, SWEDEN • TELECOMS ROSEBANK, SOUTH AFRICA • BNP BAILLI ROMAINVILLER, FRANCE • IBM TECHNO BASE BANGALORE, INDIA • DSP 3' DATA CENTRE-MERCURY ENGINEERING, RUSSIA • DIGIPLEX-OSLO, NORWAY • FAREHAM DATA CENTER, UK • ZENIUM DATA CENTRE-ISTANBUL, TURKEY • CISCO-AMSTERDAM, HOLLAND | <ul style="list-style-type: none"> • CITY BANK, THAILAND • MUSCAT INTERNATIONAL AIRPORT MC3, OMAN • IBM, SWITZERLAND • DATACENTER DTO, MINISTRY OF DEFENCE, HOLLAND • KHALIFA DATA CENTRE-ABU DHABI, U.A.E • TELECOM APRILLA-ROME, ITALY • HYDRO 66 DC, SWEDEN • GREENWICH VIEW DATA CENTRE, LONDON, UK • DATA CENTER VODAFONE, ARNHEM, HOLLAND • IBM / PHOENIX, BELGIUM | <ul style="list-style-type: none"> • BRITISH GAS, UK • SEC DATA CENTER MUNICH, GERMANY • CITY BANK, TAIWAN • MALTA DATA CENTRE, MALTA • INVESTMENT BANK, JORDAN • GREEN DATA CENTER, SWITZERLAND • TELECITY-PHASES 1&2-COURBEVOIE, FRANCE • DATAPLEX DATA CENTER, HUNGARY • HANNOVER DATA CENTER, GERMANY • CED FIRENZE, ITALY-CED TOSCANA, ITALY • MOBILY ABHUR JEDDAH, S.ARBABIA |
|---|--|---|

►► Industrial Plants

►► Textile Industry / Oil&Gas Complexes / Automotive Industry / Manufacturing Facilities / Heavy Industry



CALIK TEXTILE FACTORY, TURKMENISTAN



ARTISTIC MILINERS, PAKISTAN



UNITEX INTERNATIONAL, INDIA

- | | | |
|--|--|--|
| <ul style="list-style-type: none"> • YOUTH GROUP, BANGLADESH • TEXPRO / MLT, BRASIL • LCWAIKIKI RUBYRED GARMENTS, EGYPT • PAPIERFABRIK, GERMANY • PAGE APPARELS, INDIA • EAGLE OTTAWA-SZOLNOK, HUNGARY • C&A, BUSCHS-AARAU, NORWAY • UNITED ARYAN, KENIA • RADICI MEXICO FACTORY, MEXICO • RAMSTOR LENINGRADSKIY, RUSSIA • TIMEX GARMENTS-KATUNAYAKE, SRI LANKA | <ul style="list-style-type: none"> • AL HALEBI TEXTILE, SYRIA • ARTISTIC MILLINERS PVT LTD(AM-8), PAKISTAN • HAMPY CLOTH TEXTILE, LEBANON • CBA-GAVINO GARMENT, ETHIOPIA • FILANDA 1992, ITALY • R&T KNIT TEXTILE, MARITIUIOUS • ZAMAN TEXTILE MILLS LTD, PAKISTAN • POLY TEXTILE, LEBANON • SMART SHIRTS LANKA LTD, SRI LANKA • VIYELLATEX GROUP, BANGLADESH • INDIAN DESIGNS, INDIA | <ul style="list-style-type: none"> • GOLDEN WEAR FACTORY, JORDAN • SABRINA FACTORY, COMBODIA • DIKTAS TEKSTIL(ORENBAYAN SPINNING MILLS), EGYPT • GEA-ECOFLEX-SARSTEDT, GERMANY • MARY TEXTILE AND SPINNING FACTORY, TURKMENISTAN • CLASSIC FASHION, JORDAN • EPIC DESIGNERS, VIETNAM • ATG GLOVES, SIR LANKA • FINE APPAREL FACTORY, JORDAN |
|--|--|--|

BUSBAR FUNCTIONAL AREAS & MAJOR REFERENCES

►► Textile Industry / Automotive Industry / Manufacturing Facilities / Heavy Industry



TOYOTA TMMT-ADAPAZARI-TURKEY



RENAULT TANGER MED-MOROCCO



UNIPRESS (NISSAN) CAR PLANT-UK

- LINGOTTO, FIAT, ITALY
- VOLVO BRUSSELS ADMIN STATION BUILDING, BELGIUM
- REVOZ RENAULT CAR FACTORY, SLOVENIA
- ZAZ AUTOMOTIVE CAR FACTORY, UKRAINE
- JAGUAR LAND ROVER CAR PLANT- BROMWICH, UK
- PEUGEOT CITROEN PSA-KALUGA, RUSSIA
- LEAR CORPORATION(FACTORY), MOROCCO
- FIAT BIESLKO BIALA , POLAND
- OPEL AUTOMOTIVE FACTORY, IZMIR,

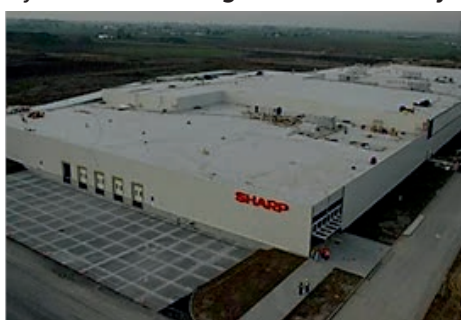
- LADA EGYPT FACTORY, EGYPT
- KAMAZ TRUCK FACTORY, RUSSIA
- MAN BUS FACTORY, ANKARA, TURKEY
- VOLVO&RENAULT TRUCK FACTORY, RUSSIA
- FIAT TORINO, ITALY
- SUZUKI MARUTI CAR FACTORY, INDIA
- OPEL CARS ANTWERP (SOCOMEC), BELGIUM
- VOLVO, OLOFSTROM, SWEDEN
- TOYOTA MIRAI AUTOMOTIVE FACTORY, RUSSIA
- TOYOTA ØKERN, NORWAY
- MERCEDES BENZ-ISTANBUL, TURKEY

- FORD AUTOMOTIVE FACTORY, RUSSIA
- HYUNDAI-ASSAN AUTO. FACTORY-KOCAELI, TURKEY
- VAN HOOL BUS FACTORY-SKOPJE, MACEDONIA
- AVTOZAVOD CAR FACTORY CHERNIGOVSKY, UKRAINE
- GM OPEL AUTOMOTIVE FACTORY, RUSSIA
- OYAK RENAULT, BURSA, TURKEY
- IVECO CAR FACTORY, UZBEKISTAN
- VOLVO-GOTEBURG-SWEDEN
- HYUNDAI CAR FACTORY, TURKEY

►► Textile Industry / Automotive Industry / Manufacturing Facilities / Heavy Industry



PHILIPS, POLAND



SHARP, POLAND



ARCELOR MITTAL STEEL ZELZATE, BELGIUM

- INDESIT RADOMSKO FACTORY, POLAND
- FIAT/FORD BRAKES MANUFACTURER, ITALY
- GLAXO SMITH-KLINE, HUNGARY
- PROLEMN-REGHIN, ROMANIA
- BRITISH AMERICAN TOBACCO FACTORY, RUSSIA
- SANOVEL, TURKEY
- PARTEX PLASTIC FACTORY, BANGLADESH
- LAURENT FACTORY, MARITIOUS
- KAZAN HELICOPTER MANUFACTURING FACTORY, RUSSIA
- DITZINGEN THALES, GERMANY
- CHEVRON, SINGAPUR

- CLEVELAND BRIDGE STEEL FACTORY, S.ARBABIA
- GILETTE FACTORY, POLAND
- NUROL STEEL FACTORY, QATAR
- COCA COLA-DUSHANBE, TAJIKISTAN
- ANSALDO TRASPORTI (TRAIN MANUFACTURER), ITALY
- PHILIP MORRIS TOBACCO FACTORY, UKRAINE
- DUNLOP SYSTEMS AND COMPONENTS-COVENTRY, UK
- TOBACCO MONOPOLY, THAILAND
- GUALA CLOURE FACTORY, INDIA
- BAKERY FACTORY KINSHASA, TANZANIA

- TVS BRAKE INDIA-CHENNAI, INDIA
- STORA ENSO PAPER FACTORY, BELGIUM
- BOSCH ZF-LENKSTEME, HUNGARY
- COCA COLA BAKU ZAVODU, AZERBAIJAN
- BISCUIT PRINCE FACTORY-KINSHASA, CONGO
- STORA ENSO PAPER FACTORY, BELGIUM
- DONG PHUONG FACTORY, VIETNAM
- GREAT WALL CERAMIC, BANGLADESH
- REXAM METAL-COCA COLA PET BOXES, EGYPT
- PLATINUM FACTORY, KENIA
- GAMA PHARMECEUTICAL, SYRIA

BUSBAR FUNCTIONAL AREAS & MAJOR REFERENCES

►► Energy Utilities

►► Power Plants / Solar Plants / Cooling Plants



ROKITA CHEMICAL PLANT-BRZEG DOLNY, POLAND



WASTE WATER TREATMENT PLANT-TRIBOLI, LEBANON

- | | | |
|--|---|--|
| <ul style="list-style-type: none"> • KUJUKHOVO POWER PLANT, RUSSIA • CHLOR ALKALI CHEMICAL PLANT, ALGERIA • DISTRICT COOLING PLANT JEBEL ALI-DUBAI, U.A.E • SHATURA POWER PLANT, RUSSIA • WASTE TO ENERGY POWER PLANT-BAKU, AZERBAIJAN • BOCAMINA, CHILE • ANSALDO APRILIA, ITALY • EMICOOOL DISTRICT COOLING PLANT-DUBAI, U.A.E • YENI ELEKTRIK CCPP POWER PLANT, TURKEY | <ul style="list-style-type: none"> • TENT A POWER PLANT, SERBIA • RAS AL KHAIR DESALINATION PLANT, S.ARABIA • SULEYMANIYE POWER PLANT, IRAQ • MARY FERTILIZER COMPLEX, TURKMENISTAN • AL KHOMS POWER PLANT, LIBYA • NAINAWA POWER PLANT, IRAQ • LOTUS ENERGY, TURKMENISTAN • CARRINGTON POWER PLANT, UK • TONOLSK POLYMER LLC, RUSSIA • WAVE DISTRICT COOLING PLANT, OMAN • BESMAYA POWER PLANT, IRAQ • SHAHJI BAZAR POWER PLANT, | <ul style="list-style-type: none"> • BANGLADESH • GE GENERAL ELECTRIC PLANT, RUSSIA • QURAYYAH POWER PLANT, S.ARABIA • EREN 1200MV POWER PLANT, TURKEY • DISTRICT COOLING PLANT AL RAHA BEACH-DUBAI, U.A.E • DISTRIC COOLING PLANT RB02/RB03, U.A.E • AL KHAIRAT POWER PLANT, IRAQ • LOTOS, POLAND • ERBIL CCPP POWER PLANT, IRAQ • SURGUTSKAYA POWER PLANT, RUSSIA • ENERJISA POWER PLANT, TURKEY • DISTRICT COOLING PLANT T07, U.A.E |
|--|---|--|

►► Commercial Buildings

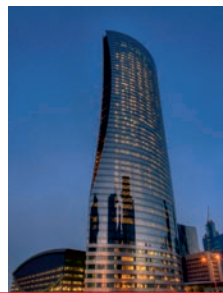
►► Office Towers / Residential Towers / Hotels / Shopping Malls



**ALMAS TOWER
UAE**



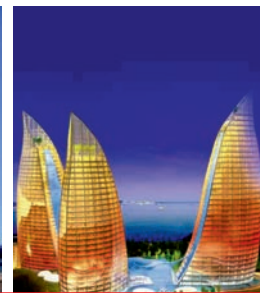
**NAFISSI TOWER
KUWAIT**



**NAVIGATION TOWER
QATAR**



**MOSCOW CITY
RUSSIA**



**FLAME TOWERS
AZERBAIJAN**




**TRUMP TOWER
TURKEY**


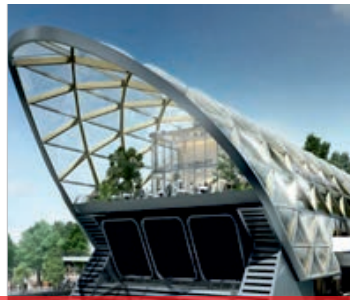

- | | | |
|--|---|---|
| <ul style="list-style-type: none"> • CHANEL TOWER-HAMBURG, GERMANY • PROSTA TOWER-WARSZAWA, POLAND • SOCAR TOWER-BAKU, AZERBAIJAN • BEIRUT TERRACES, LEBANON • LULU TOWER, KUWAIT • AL TADAMON TWIN TOWERS COMPLEX, LIBYA • ROTTERDAM WORLD PORT CENTER, HOLLAND • AL BASSAM TOWER-MAKKAH, S. ARABIA • AMMAR TOWER, PALESTINE | <ul style="list-style-type: none"> • PAVELETSKY TOWER-MOSCOW, RUSSIA • JAFF TOWER, IRAQ • PARADISE TOWER, MARITIOUS • BARJEEL TOWER, QATAR • CORP GROUP TOWER, CHILI • SKY OFFICE-ZAGREB, CROATIA • UBC TOWER, ROMANIA • BAHREIN FINANCIAL TOWER, BAHRAIN • MOBIMO TOWER-ZURICH, SWITZERLAND • DUNA TOWER, BUDAPEST, HUNGARY • EXECUTIVE TOWER, U.A.E • HCBS BANK-ISTANBUL, TURKEY • GULAN PARK OFFICE TOWER, IRAQ | <ul style="list-style-type: none"> • CROYDON CURVE, UK • ENVOY TOWER, BANGLADESH • LAKE POINT TOWER, NIGERIA • TIARA RESIDENCE-PALM JUMEIRAH, U.A.E • CITY OF CAPITALS, RUSSIA • INDIGO TOWER, U.A.E • LOTUS 99 BUILDING, EGYPT • SALAPURYA TOWERS, INDIA • TALAN TOWERS, KAZAKHISTAN • UAP TOWER, KENIA • ISOZAKI TOWER-MILANO, ITALY |
|--|---|---|

BUSBAR FUNCTIONAL AREAS & MAJOR REFERENCES

►► Office Towers / Residential Towers / Hotels / Shopping Malls

			
SWISSOTEL & FAIRMONT SINGAPORE	HILTON HOTEL-JEDDAH	SWISS HOTEL-MOSCOW	WESTMINISTER PARK PLAZA HOTELUK
<ul style="list-style-type: none"> • HILTON HOTEL HEATHROW, UK • OLD MILL-RADISSON BLUE-BELGRADE, SERBIA • IBIS HOTEL REDUTA WARSZAWA, POLAND • RIXOS HOTEL PALM-DUBAI, U.A.E • SHERATON HOTEL-DOHA, QATAR • HOTEL PARK INN, NORWAY • RITZ CARLTON HOTEL-BERLIN, GERMANY • INTERCONTINENTAL HOTEL, UZBEKISTAN • İKOT EKPENE HOTEL, NIGERIA • BANADER ROTANA HOTEL, BAHRAIN 	<ul style="list-style-type: none"> • GOLDEN PYRAMIDS PLAZA, EGYPT • HOTEL MAINPORT, ROTTERDAM, HOLLAND • FIRST SITE HOTEL, BUDAPEST, HUNGARY • DIVAN HOTEL, IRAQ • NOVOTEL PLATINIUM HOTEL, THAILAND • FLAMINGO HOTEL & CASINO, MACEDONIA • SHERATON HOTEL, CAGLIARI, ITALY • MERIDIEN HOTEL-MAKKAH, S.ARBABIA • HILTON, CHENNAI-INDIA • FOUR SEASONS-S.PETERSBURG, RUSSIA • OCEAN PARADISE-CHITTAGONG, BANGLADESH • JW MARRIOTT ABSHERON HOTEL, AZERBAIJAN 	<ul style="list-style-type: none"> • SLEEP IN HOTEL, TANZANIA • MALABO HILTON HOTEL, EQUATORIAL GUINEA • ALNASR HOTEL-RIXOS PREMIUM, LIBYA • ASHGABAT STADIUM HOTEL, TURKMENISTAN • GRAND HOTEL, STOCKHOLM, SWEDEN • BLACK SEA HOTEL & RESIDANCE, GEORGIA • BERJAYA HOTEL, MAURITIUS • ROSA PARK HOTEL-SUDAN • ASTANA HOTEL, KAZAKISTAN • KEMPINSKY HOTEL AQABA, JORDAN 	

►► Office Towers / Residence Towers / Hotels / Shopping Malls

			
THE DUBAI MALL U.A.E.	CANARY WHARF SHOPPING CENTRE UK	GALERIA SHOPPING MALL RUSSIA	SIAM SQUARE ONE THAILAND
<ul style="list-style-type: none"> • MALL OF SCANDINAVIA, SWEDEN • ALDI SHOPPING CENTER, IRELAND • MALL OF QATAR (ONGOING), QATAR • SHOPPING CENTRE, WIESBADEN, GERMANY • CITY SCAPE MAL, EGYPT • DECATHLON, HUNGARY • GALAXY SHOPPING MALL, INDIA • MIGROS MVS, SUHR-AARAU, SWITZERLAND • BAB TRABLUS SHOPPING MALL, LIBYA • BUCURESTI MALL, ROMANIA • GARDEN CITY MALL-NAIROBI, KENIA 	<ul style="list-style-type: none"> • MAJIDI MALL SHOPPING CENTER, IRAQ • MEDENI DINC SHOPPING CENTER, TURKMENISTAN • SCHLOSSGALERIE (SHOPPING MALL), HOLLAND • SYLHET CITY CENTRE, BANGLADESH • MEGA BANGNA SHOPPING CENTRE, THAILAND • FORUM GLIWICE, POLAND • COOP SHOPPING CENTRE, ITALY • CAPITAL MALL, MACEDONIA • MADOU TOWER, BELGIUM • ARENA CENTRE, CROATIA • CAPITOL PARK SABAC, SERBIA 	<ul style="list-style-type: none"> • TANGS PLAZA, SINGAPORE • GANJLIK MALL-BAKU, AZERBAIJAN • PADOL CITY MALL, UKRAINE • MEGA IKEA SHOPPING & FAMILY CENTER, RUSSIA • RACETRACK MALL CITY CENTER, OMAN • RUBY SHOPPING MALL, KRYGYZSTAN • MAXI MARTIj, AUSTRIA • AKER BRYGGE, NORWAY • CITADEL MALL, MARITIOUS • SETIF PARK MALL, ALGERIA • DREAM TOWN-KIEV, UKRANIA 	

BUSBAR FUNCTIONAL AREAS & MAJOR REFERENCES

►► Service Compounds

►► Hospitals / Universities / Public Utilities / Government Buildings



HOSPITAL OF VESOUL-FRANCE



UCLH HOSPITAL-LONDON, UK



RADIUM HOSPITAL-NORWAY

- WISMAR KRAKEN HOUSE , GERMANY
- KAROLINSKA HOSPITAL, SWEEDEN
- St. GIOVANNI HOSPITAL, ITALY
- St. ELISABET HOSPITAL, BELGIUM
- AGA KHAN HOSPITAL, KENIA
- ELCO / SERVITEC, LUXEMBURG
- NOV GORAD, RUSSIA
- St JAMES' UNIVERSITY HOSPITAL-LONDON, UK
- CLINICA ALEMANA, CHILE
- LUCCA MASSA HOSPITAL, ITALY
- THE WORLD MEDICAL CENTER, THAILAND

- ASHGABAT 6 HOSPITAL COMPLEX, TURKMENISTAN
- MAHRA HOSPITAL, AL MARJ, LIBYA
- TOSCANO HOSPITAL, ITALY
- BAKU MILLI SAGLAMLIK HOSPITAL, AZERBAIJAN
- SOUTHERN GENERAL HOSPITAL-GLASGOW, SCOTLAND
- Sh. KHALIFA HOSPITAL,RAS AL KHAIMA-U.A.E
- UCLH , LONDON, UK
- BOTINSKAYA HOSPITAL, RUSSIA
- LEWISHAM HOSPITAL, LONDON, UK
- SECURITY FORCE HOSPITAL-MAKKAH,

- WISMAR KRAKEN HOUSE , GERMANY
- KAROLINSKA HOSPITAL, SWEEDEN
- St. GIOVANNI HOSPITAL, ITALY
- St. ELISABET HOSPITAL, BELGIUM
- AGA KHAN HOSPITAL, KENIA
- ELCO / SERVITEC, LUXEMBURG
- NOV GORAD, RUSSIA
- St JAMES' UNIVERSITY HOSPITAL-LONDON, UK
- CLINICA ALEMANA, CHILE
- LUCCA MASSA HOSPITAL, ITALY
- THE WORLD MEDICAL CENTER, THAILAND

►► Hospitals / Universities / Public Utilities / Government Buildings



UNIVERSITY OF LONDON-SENATE HOUSE-UK



JUVENTUS STADIUM-TORINO-ITALY



RIJKSMUSEUM-HOLLAND

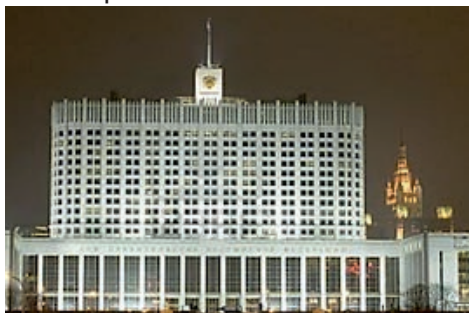
- AL WAHDA SPORT CITY, U.A.E
- MULTIFUNKTIONS ARENA STADIUM, DUSSELDORF, GERMANY
- St JACOBS PARK STADIUM, BASEL, SWITZERLAND
- TOP GRACIOUS, KAUSHING BEYSBALL STADIUM, TAIWAN
- NARESUAN UNIVERSITY, THAILAND
- EXCEL EXHIBITION CENTER-LONDON, UK
- INTERNATIONAL HOUSE OF MUSIC, RUSSIA
- AL FATEH UNIVERSITY, LIBYA
- OMAN CONVENTION&EXHIBITION CENTRE, OMAN
- BAKU OLYMPIC STADIUM, AZERBAIJAN

- PUBLIC LIBRARY, AMSTERDAM , HOLLAND
- PALA LOTTOMATICA (BASKETBALL STADIUM), ROME, ITALY
- PARK OLYMPIQUE LYONNAIS STADIUM, FRANCE
- DONBASS ARENA, SHAKTAR DONETSK STADIUM, UKRAINE
- ROYAL OPERA HOUSE, OMAN
- DOHUK CULTURAL CENTER, IRAQ
- ROMA AUDITORIUM, ITALY
- LATVIAN NATIONAL LIBRARY, LATVIA
- NORTH LEBANON UNIVERSITY, LEBANON
- 2012 OLYMPIC STADIUM-LONDON, UK
- STADIO COMUNALE DI TORINO (STADIUM) , ITALY

- NATIONAL LIBRARY OF PARIS, FRANCE
- FTC STADIUM-BUDAPEST, HUNGARY
- IQRA UNIVERITY, PAKISTAN
- HAMBURG ARENA SPORT STADIUM, GERMANY
- AL SAAD SPORTS COMPLEX-DOHA, QATAR
- AGT THEATRE COMPLEX, TURKMENISTAN
- MOSCOW STATE UNIVERSITY, RUSSIA
- UNIVERSITY EINDHOVEN, HOLLAND
- UNIVERSITY OF BOLOGNA, ITALY
- KTH, UNIVERSITY, SWEEDEN
- UNIVERSITY OF WARSAW, CENT I – II, POLAND

BUSBAR FUNCTIONAL AREAS & MAJOR REFERENCES

►► Hospitals / Universities / Public Utilities / Government Buildings



THE HOUSE OF GOVERNMENT-RUSSIA



MINISTRY OF DEFENCE BUILDING-LONDON



TRIBUNAL COURT BUILDING, ITALY

- INDIA EMBASSY TECHZONE, INDIA
- DAR EL EFTAA POWER HOUSE, EGYPT
- MINISTRY OF DEFENCE, HOLLAND
- CPWD-EXCISE BUILDING, INDIA
- INDIA TOWNHEMBASSY TECHZONE, INDIA
- THAI TAP WATER, TAIWAN
- TOWNHALL ASSEN, HOLLAND
- MINISTRY OF INTERIOR AFFAIRS, LONDON, UK
- MINISTRY OF INTERNAL AFFAIRS, HOLLAND
- MINISTRY BUILDING, TURKMENISTAN
- TRAFFIC CONTROL CENTER, AZERBAIJAN

- WEIGHTLIFTING FEDERATION, BAHRAIN
- DUBAI CENTRAL PRISON, DUBAI
- SONATRACH HQ-ORAN, ALGERIA
- LAW COURTS, KENIA
- NATIONAL SECURITY BUILDING, AZERBAIJAN
- MOFA BUILDING (MINISTRY OF FOREIGN AFFAIRS), UK
- COURT OF JUSTICE, LUXEMBOURG
- MINISTRY OF INFRASTRUCTURE-DEN HAAG, HOLLAND
- DEPART. OF SOCIAL DEVEL. AND WELFARE, TAIWAN
- OLD PARLIAMENT MARTIOUS
- ALCUBAR INCOME TAX BUILDING, INDIA

- GAS MINISTRY BUILDING, TURKMENISTAN
- REKENCENTRUM POLITIE AMSTERDAM, HOLLAND
- CONDOMINIUM 8 FLOORS REGIMENT ROYAL GUARDS, THAILAND
- MINISTRY OF AGRICULTURE-DEN HAAG, HOLLAND
- TES-MILITAR COMPLEX, GERMANY
- SHASTRI BHAWAN, INDIA
- TOWNHALL ARNHEM, HOLLAND
- PALAIS DE JUSTICE LIÈGE, BELGIUM
- DAR EL EFTAA POWERHOUSE, EGYPT
- DUBAI POLICE FORCE H&Q, U.A.E

►► Transportation Infrastructure

►► Highway Tunnels / Railway Tunnels / Metro Stations/ Airports



ABU DHABI INT. AIRPORT-U.A.E



TAIPEI METRO STATIONS-TAIWAN



HEATHROW AIRPORT-LONDON

- LUFTHANSA AIRWAYS, GERMANY
- HEYDAR ALIYEV INTERNATIONAL AIRPORT, AZERBAIJAN
- CHANGI AIRPORT T3, SINGAPORE
- SKOPJE ALEXANDER THE GREAT AIRPORT, MACEDONIA
- MRC DELHI METRO, INDIA
- CANARY WHARF CROSS RAIL STATION, UK
- AIRBUS HAMBURG, GERMANY
- CENTRAL STATION ROTTERDAM, HOLLAND
- PULKOVO AIRPORT-ST.PETERSBURG, RUSSIA
- OSLO GARDERMOEN AIRPORT T2, NORWAY

- PRISTINA AIRPORT, ALBANIA
- MUSCAT INTERNATIONAL AIRPORT, OMAN
- TURKMENISTAN AIRPORT, TURKMENISTAN
- ASTANA AIRPORT, KAZAKHISTAN
- LONDON GATWICK AIRPORT-UK
- BIAC-ZAVENTEM AIRPORT, BELGIUM
- SCHIPOL AIRPORT, HOLLAND
- CIAMPINO AIRPORT-ROME, ITALY
- ISTANBUL ATATURK AIRPORT, TURKEY
- DUBAI INTERNATIONAL AIRPORT, U.A.E
- HARAMAIN RAILWAY-MADINAH, S.ARBIA
- LUXEMBOURG AIRPORT-LUXEMBOURG

- FIUMICINO CARGO CITY-ROME, ITALY
- CITYTUNNEL, SWEEDEN
- SHEREMETYEVO 3 AIRPORT, RUSSIA
- ERBIL INTERNATIONAL AIRPORT, IRAQ
- WARSZAWA AIRPORT, POLAND
- BAHNHOF, SWEEDEN
- KING KHALOD INT. AIRPORT T5, S.ARBIA
- IÉGE ARPT-HUSSEIN DEV, ALGERIA
- CAIRO METRO, EGYPT
- DUSHANBE AIRPORT, TAJIKISTAN
- TREVISO AIRPORT-VENICE, ITALY
- SCHIPOL AIRPORT, NETHERLAND

EAE LIGHTING SYSTEMS PRODUCT RANGE

- High Bay Luminaires
- Indoor & Outdoor Lighting
- Linear Lighting Systems
- Architectural & Store Lighting Systems



REVOLED-X

Come together experience with next...

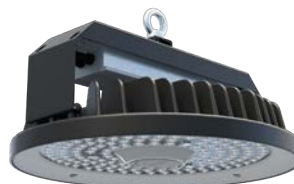
- Ultra-high performance LED high-bay luminaire
Up to 180 lm/W efficacy
- Up to +70°C ambient operating temperature
- 5klm - 45klm output range
- 30° / 30°x90° / 60° / 90° / 25°x105°
Choice of 6 different beam angles
- Cable tray / busbar / angled wall / Seismic suspension kits
- 1H / 3H EMK models-DALI wired / RF wireless control options



SROUND

The eye in the high...

- Ultra-high performance LED high-bay luminaire
Up to 177 lm/W efficacy
- Up to +70°C ambient operating temperature
- 5klm - 26klm output range
- ARENA / LOWBAY / LOWLOWBAY / ASSYMETRIC
- Choice of 4 different beam angles
- One point / Double point / Anti-twist / Busbar / Cabletray suspension kits
- 1H / 3H EMK models-DALI wired / RF wireless control options



HBC

Functional, efficient, reliable...

- High performance LED highbay lighting luminaire
Up to 142 lm/W efficacy
- 10klm - 28klm lumen output range / 79W - 243W power consumption range
- Frameless model (IK05) / tempered glass (IK10) model options
- Arena / Lowbay2 different beam angle options
- One point / Cable tray / Busbar suspension kit options
- 1H / 3H EMK models - 1-10V / DALI control options



INFINO INFINO IP64

Flawless light experience for infinite applications...

- LED linear trunking system
Energy transmission, lighting, control and more - All in 1
- Simple, fast and tool-free installation
- 30° / 60° / 90° / Assymetric
Double Assymetric / Lambertian Beam
Choice of 6 different beam angles

EAE AUTOMATION SYSTEMS

General Features

Simplex recognized in both residential and industrial areas, consistent with international standards, unlimited expandable, that can be flexible configured enough to meet customer's expectations and automation system supported by a large ecosystem independently of the main suppliers because of it uses open system protocols.



Use energy when necessary.



Use energy until needed.





E-kabin S Modular Floor Standing Enclosures IP55

E-kabin D Modular Floor Standing Enclosures IP41-55

E-kabin O Monoblock Enclosures IP66

E-kabin E Distribution Switchboard IP55

E-kabin K Console Systems IP55

E-kabin T Terminal Boxes IP67

E-kabin H Outdoor Enclosures IP55-66

E-kabin X Stainless Steel Enclosures IP55-67

E-kabin A Aluminium Enclosures IP55-67

E-kabin B Busbar Supports

HIGHLIGHTS



E-kabin X

Our X Series Stainless Steel products consist of, IP55, IP41 XS Serie Indoor type, XH Serie Outdoor type Floor Standing Enclosures, IP66 XM Serie Monoblock Wall Mounted Enclosures, IP66 XT Serie Terminal Boxes and IP55 XK Series Consoles.

- ✓ Clean and Smooth Surface
- ✓ Optional Stainless Steel Lock
- ✓ Robust Hidden Hinge
- ✓ Identical E-Kabin Interior Accessories
- ✓ Foam-In-Place Polyurethane Gasket



E-kabin O

E-Kabin O Series IP66 Monoblock Enclosures designed for indoor applications.

- ✓ Usefull Lock System
- ✓ Bidirectional door opening
- ✓ 180° Hinge Accessory
- ✓ Easy Mounting Bracket
- ✓ Foam-In-Place Polyurethane Gasket



EAE ELEKTRİK

Address:

Akçaburgaz Mahallesi 3114. Sokak. No:10 - 34522
Esenyurt/İstanbul

Phone : +90 212 866 20 00 (pbx)

Fax : +90 212 866 24 20

E-mail : info@eaegroup.com

www.eaeelectric.com



EAE LIGHTING SYSTEMS

Address:

İkitelli Organize Sanayi Bölgesi Ziya Gökalp Mahallesi Eski Turgut Özal Caddesi No: 20 34490
Başakşehir / İSTANBUL

Phone : +90 212 413 21 00 (pbx)

Fax : +90 212 549 37 90

E-mail : aydexport@eae.com.tr

www.eaelighting.com



EAE LV PANEL ENCLOSURES

Address:

İkitelli Organize Sanayi Bölgesi Ziya Gökalp Mahallesi Eski Turgut Özal Caddesi No: 20 34490
Başakşehir / İSTANBUL

Phone : +90 212 549 26 39 (pbx)

Fax : +90 212 549 37 90

E-mail : eae.exportsales@eaegroup.com

www.eaeelektroteknik.com



EAE AUTOMATION SYSTEMS

Address:

İkitelli Organize Sanayi Bölgesi Ziya Gökalp Mahallesi Eski Turgut Özal Caddesi No: 20 34490
Başakşehir / İSTANBUL

Phone : +90 212 549 97 13 (pbx)

Fax : +90 212 549 37 90

E-mail : eaetechnology.salessupport@eaegroup.com

www.eaetechnology.com

**EAE Companies**

United States of America, Italy, Germany, Australia, Russia

EAE Offices

United Arab Emirates, India, Saudi Arabia, Egypt, Turkmenistan, Azerbaijan, Portugal, Vietnam, Spain, France

EAE Distributors

- UK, Belgium, Czech Republic, Croatia, Cyprus, France, Germany, Hungary, Italy, Netherlands, Macedonia, Norway, Poland, Romania, Serbia, Slovakia, Slovenia, Spain, Sweden, Switzerland, Denmark, Finland, Lithuania, Latvia
- Algeria, Egypt, Ethiopia, Mauritius, Morocco, Tanzania, S.Africa
- Bahrain, Kuwait, Lebanon, Oman, Qatar, Saudi Arabia, United Arab Emirates
- Azerbaijan, Belarus, Kazakhstan, Turkmenistan, Ukraine, Bulgaria, Russia
- Bangladesh, India, Pakistan, Sri Lanka
- Singapore, Thailand, Taiwan, Vietnam
- Chile, Mexico

EAE is in more than 100 countries



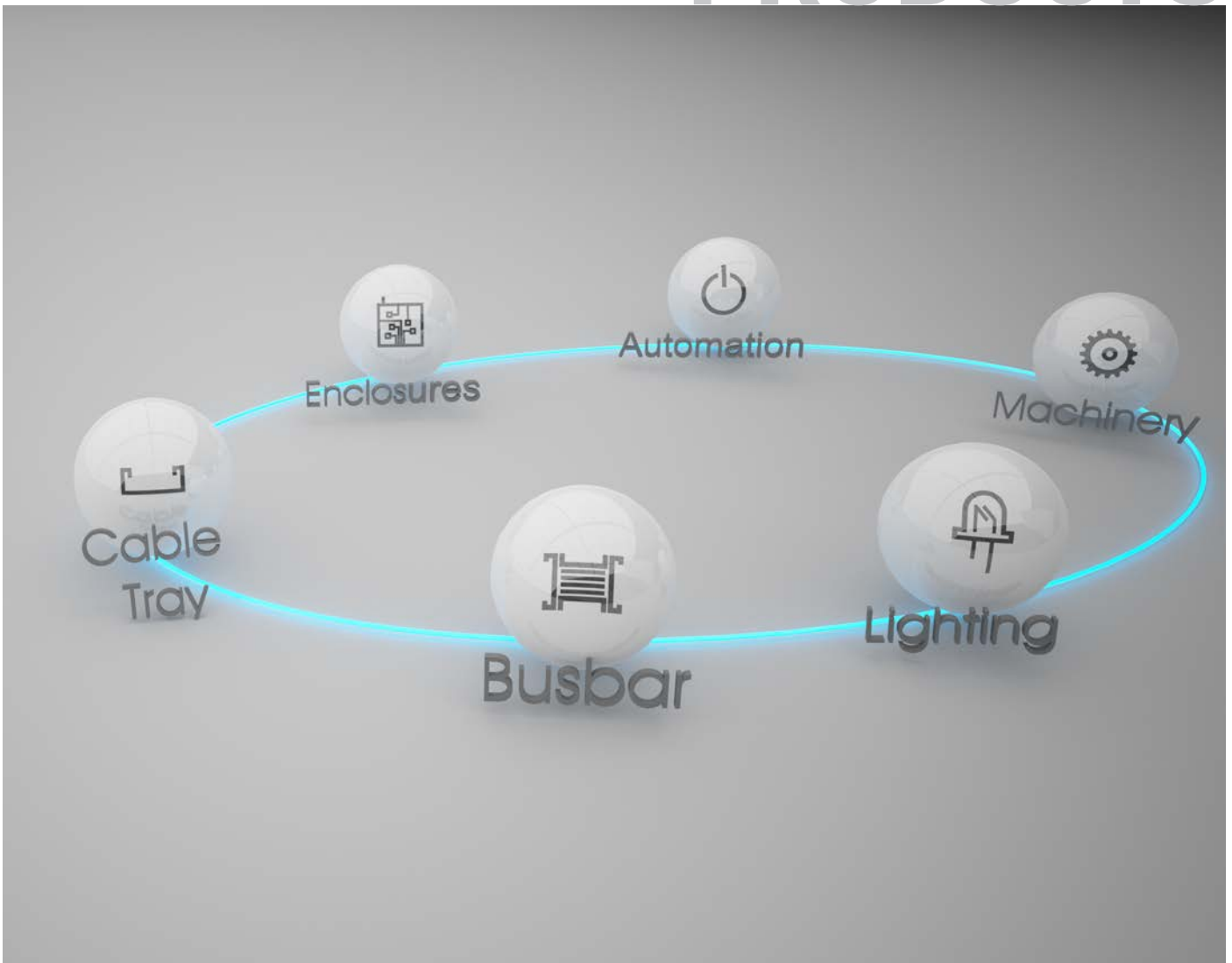
Contact Details: Akcaburgaz Mahallesi, 3114.Sokak No:10 , 34522 Esenyurt/ISTANBUL-TURKEY

Tel: 00 90 212 866 20 00(Pbx) **Fax:** 00 90 212 886 24 21 **Web:** www.eaegroup.com **Mail:** info@eaegroup.com

[illegible]

Please duplicate this page for your own use.

EAE GROUP PRODUCTS



This is only for introduction of EAE products. EAE reserves the right to modify any part of this binder.
Please ask for detailed information for any specific product to EAE Headquarters.

EAE Elektrik A.S.
Akcaburgaz Mahallesi,
3114. Sokak, No:10 34522
Esenyurt - Istanbul
Pbx: +90 (212) 866 20 00
Fax: +90 (212) 886 24 20
Mail: info@eaegroup.com

Binder Eng / D.S / 02/04/2021
1000 pcs

